

CERCAM Rabbit pAb

Catalog No.: A14359

Basic Information

Observed MW

75kDa

Calculated MW

68kDa

Category

Primary antibody

Applications

ELISA, WB

Cross-Reactivity

Human

Background

Enables identical protein binding activity. Acts upstream of or within cell adhesion. Predicted to be located in endoplasmic reticulum lumen.

Recommended Dilutions

WB 1:500 - 1:2000

Immunogen Information

Gene ID

51148

Swiss Prot

Q5T4B2

Immunogen

Recombinant fusion protein containing a sequence corresponding to amino acids 466-595 of human CERCAM (NP_057258.3).

Synonyms

CEECAM1; GLT25D3; CERCAM

Contact

 | www.abclonal.com

Product Information

Source

Rabbit

Isotype

IgG

Purification

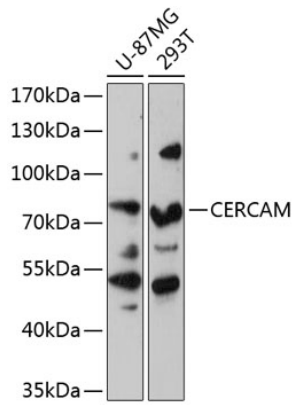
Affinity purification

Storage

Store at -20°C. Avoid freeze / thaw cycles.

Buffer: PBS with 0.01% thimerosal, 50% glycerol, pH7.3.

Validation Data



Western blot analysis of extracts of various cell lines, using CERCAM antibody (A14359) at 1:3000 dilution.

Secondary antibody: HRP Goat Anti-Rabbit IgG (H+L) (AS014) at 1:10000 dilution.

Lysates/proteins: 25µg per lane.

Blocking buffer: 3% nonfat dry milk in TBST.

Detection: ECL Basic Kit (RM00020).

Exposure time: 90s.