

CRIP T Rabbit pAb

Catalog No.: A14336

Basic Information

Observed MW

11kDa

Calculated MW

11kDa

Category

Primary antibody

Applications

ELISA, WB

Cross-Reactivity

Mouse, Rat

Background

This gene encodes a protein that binds to the PDZ3 peptide recognition domain. The encoded protein may modulates protein interactions with the cytoskeleton. A mutation in this gene resulted in short stature with microcephaly and distinctive facies.

Recommended Dilutions

WB 1:500 - 1:2000

Immunogen Information

Gene ID

9419

Swiss Prot

Q9P021

Immunogen

Recombinant fusion protein containing a sequence corresponding to amino acids 1-101 of human CRIP T (NP_054890.1).

Synonyms

SSMDF; HSPC139; CRIP T

Contact

 | www.abclonal.com

Product Information

Source

Rabbit

Isotype

IgG

Purification

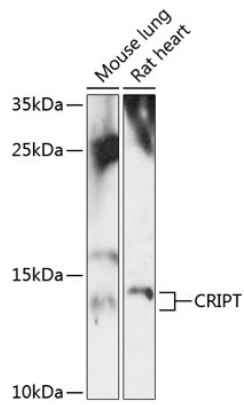
Affinity purification

Storage

Store at -20°C. Avoid freeze / thaw cycles.

Buffer: PBS with 0.01% thimerosal, 50% glycerol, pH7.3.

Validation Data



Western blot analysis of extracts of various cell lines, using CRIPT antibody (A14336) at 1:3000 dilution.

Secondary antibody: HRP Goat Anti-Rabbit IgG (H+L) (AS014) at 1:10000 dilution.

Lysates/proteins: 25µg per lane.

Blocking buffer: 3% nonfat dry milk in TBST.

Detection: ECL Enhanced Kit (RM00021).

Exposure time: 90s.