

CHMP7 Rabbit pAb

Catalog No.: A14334

Basic Information

Observed MW

51kDa

Calculated MW

51kDa

Category

Primary antibody

Applications

ELISA, WB

Cross-Reactivity

Mouse

Background

Involved in several processes, including late endosome to vacuole transport; midbody abscission; and mitotic nuclear division. Located in cytosol; nuclear envelope; and nucleoplasm. Part of ESCRT III complex. Colocalizes with chromatin.

Recommended Dilutions

WB 1:500 - 1:2000

Immunogen Information

Gene ID

91782

Swiss Prot

Q8WUX9

Immunogen

Recombinant fusion protein containing a sequence corresponding to amino acids 204-453 of human CHMP7 (NP_689485.1).

Synonyms

CHMP7

Contact

 | www.abclonal.com

Product Information

Source

Rabbit

Isotype

IgG

Purification

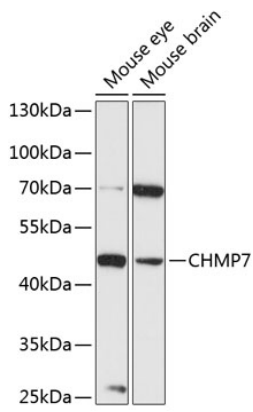
Affinity purification

Storage

Store at -20°C. Avoid freeze / thaw cycles.

Buffer: PBS with 0.01% thimerosal, 50% glycerol, pH7.3.

Validation Data



Western blot analysis of extracts of various cell lines, using CHMP7 antibody (A14334) at 1:3000 dilution.

Secondary antibody: HRP Goat Anti-Rabbit IgG (H+L) (AS014) at 1:10000 dilution.

Lysates/proteins: 25µg per lane.

Blocking buffer: 3% nonfat dry milk in TBST.

Detection: ECL Basic Kit (RM00020).

Exposure time: 90s.