

RRP36 Rabbit pAb

Catalog No.: A14328

Basic Information

Observed MW

36kDa

Calculated MW

30kDa

Category

Primary antibody

Applications

ELISA, WB

Cross-Reactivity

Human

Background

RRP36 functions at an early stage in the processing of 35S preribosomal RNA into the mature 18S species (Gerus et al., 2010 [PubMed 20038530]).

Recommended Dilutions

WB 1:500 - 1:2000

Immunogen Information

Gene ID

88745

Swiss Prot

Q96EU6

Immunogen

Recombinant fusion protein containing a sequence corresponding to amino acids 1-259 of human RRP36 (NP_149103.1).

Synonyms

C6orf153; dj20C7.4; RRP36

Contact

 | www.abclonal.com

Product Information

Source

Rabbit

Isotype

IgG

Purification

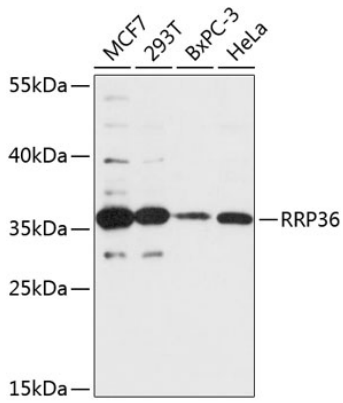
Affinity purification

Storage

Store at -20°C. Avoid freeze / thaw cycles.

Buffer: PBS with 0.01% thimerosal, 50% glycerol, pH7.3.

Validation Data



Western blot analysis of various lysates using RRP36 Rabbit pAb (A14328) at 1:3000 dilution.
Secondary antibody: HRP Goat Anti-Rabbit IgG (H+L) (AS014) at 1:10000 dilution.
Lysates/proteins: 25µg per lane.
Blocking buffer: 3% nonfat dry milk in TBST.
Detection: ECL Basic Kit (RM00020).
Exposure time: 90s.