

# RABL3 Rabbit pAb

Catalog No.: A14327

## Basic Information

### Observed MW

26kDa

### Calculated MW

26kDa

### Category

Primary antibody

### Applications

ELISA, WB, IF/ICC

### Cross-Reactivity

Human, Mouse

## Background

Predicted to enable GTP binding activity; GTPase activity; and protein homodimerization activity. Involved in regulation of Ras protein signal transduction and regulation of protein lipidation. Predicted to be active in endomembrane system. Implicated in pancreatic cancer.

## Recommended Dilutions

|               |                |
|---------------|----------------|
| <b>WB</b>     | 1:500 - 1:2000 |
| <b>IF/ICC</b> | 1:50 - 1:200   |

## Immunogen Information

|                |                   |
|----------------|-------------------|
| <b>Gene ID</b> | <b>Swiss Prot</b> |
| 285282         | Q5HYI8            |

### Immunogen

Recombinant fusion protein containing a sequence corresponding to amino acids 1-236 of human RABL3 (NP\_776186.2).

### Synonyms

PNCAS; RABL3

## Contact

 | [www.abclonal.com](http://www.abclonal.com)

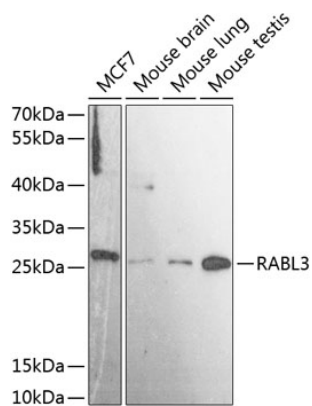
## Product Information

|               |                |                       |
|---------------|----------------|-----------------------|
| <b>Source</b> | <b>Isotype</b> | <b>Purification</b>   |
| Rabbit        | IgG            | Affinity purification |

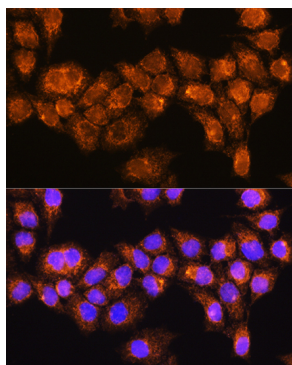
### Storage

Store at -20°C. Avoid freeze / thaw cycles.  
Buffer: PBS with 0.01% thimerosal, 50% glycerol, pH7.3.

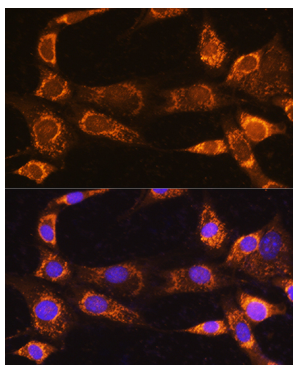
## Validation Data



Western blot analysis of various lysates using RABL3 Rabbit pAb (A14327) at 1:3000 dilution. Secondary antibody: HRP Goat Anti-Rabbit IgG (H+L) (AS014) at 1:10000 dilution. Lysates/proteins: 25µg per lane. Blocking buffer: 3% nonfat dry milk in TBST. Detection: ECL Basic Kit (RM00020). Exposure time: 90s.



Immunofluorescence analysis of HeLa cells using RABL3 Rabbit pAb (A14327) at dilution of 1:100. Secondary antibody: Cy3 Goat Anti-Rabbit IgG (H+L) (AS007) at 1:500 dilution. Blue: DAPI for nuclear staining.



Immunofluorescence analysis of NIH/3T3 cells using RABL3 Rabbit pAb (A14327) at dilution of 1:100. Secondary antibody: Cy3 Goat Anti-Rabbit IgG (H+L) (AS007) at 1:500 dilution. Blue: DAPI for nuclear staining.