

RBMX2 Rabbit pAb

Catalog No.: A14321

Basic Information

Observed MW
37kDa

Calculated MW
37kDa

Category
Primary antibody

Applications
ELISA, WB

Cross-Reactivity
Mouse

Background

Enables RNA binding activity. Involved in mRNA splicing, via spliceosome. Located in nucleus. Part of U2-type precatalytic spliceosome.

Recommended Dilutions

WB 1:500 - 1:2000

Immunogen Information

Gene ID	Swiss Prot
51634	Q9Y388

Immunogen
Recombinant fusion protein containing a sequence corresponding to amino acids 1-322 of human RBMX2 (NP_057108.2).

Synonyms
Snu17; CGI-79; RBMX2

Contact

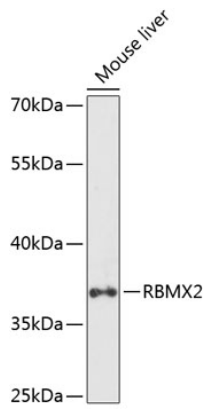
 | www.abclonal.com

Product Information

Source	Isotype	Purification
Rabbit	IgG	Affinity purification

Storage
Store at -20°C. Avoid freeze / thaw cycles.
Buffer: PBS with 0.01% thimerosal, 50% glycerol, pH7.3.

Validation Data



Western blot analysis of extracts of mouse liver, using RBMX2 antibody (A14321) at 1:1000 dilution.
Secondary antibody: HRP Goat Anti-Rabbit IgG (H+L) (AS014) at 1:10000 dilution.
Lysates/proteins: 25 μ g per lane.
Blocking buffer: 3% nonfat dry milk in TBST.
Detection: ECL Basic Kit (RM00020).
Exposure time: 90s.