

# Coagulation Protein C Rabbit pAb

Catalog No.: A1432

## Basic Information

### Catalog No.

A1432

### Observed MW

50kDa

### Calculated MW

52kDa/57kDa

### Category

Primary antibody

### Applications

WB, IHC

### Cross-Reactivity

Human, Mouse, Rat

## Recommended Dilutions

<b>WB</b>	1:500 - 1:2000
<b>IHC</b>	1:50 - 1:200

## Contact

 | [www.abclonal.com](http://www.abclonal.com)

## Background

This gene encodes a vitamin K-dependent plasma glycoprotein. The encoded protein is cleaved to its activated form by the thrombin-thrombomodulin complex. This activated form contains a serine protease domain and functions in degradation of the activated forms of coagulation factors V and VIII. Mutations in this gene have been associated with thrombophilia due to protein C deficiency, neonatal purpura fulminans, and recurrent venous thrombosis.

## Immunogen Information

<b>Gene ID</b>	<b>Swiss Prot</b>
5624	P04070

### Immunogen

Recombinant fusion protein containing a sequence corresponding to amino acids 182-461 of human Coagulation Protein C (NP\_000303.1).

### Synonyms

PROC;APC;PC;PROC1;THPH3;THPH4

## Product Information

<b>Source</b>	<b>Isotype</b>	<b>Purification</b>
Rabbit	IgG	Affinity purification

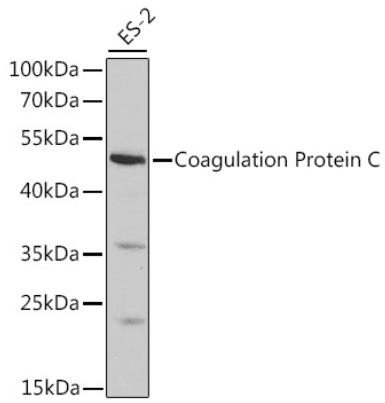
### Storage

Store at -20°C. Avoid freeze / thaw cycles.

Buffer: PBS with 0.02% sodium azide, 50% glycerol, pH7.3.

## Validation Data

---



Western blot analysis of extracts of ES-2 cells, using Coagulation Protein C antibody (A1432) at 1:1000 dilution.

Secondary antibody: HRP Goat Anti-Rabbit IgG (H+L) (AS014) at 1:10000 dilution.

Lysates/proteins: 25ug per lane.

Blocking buffer: 3% nonfat dry milk in TBST.