

MASTL Rabbit pAb

Catalog No.: A14294

Basic Information

Observed MW

110kDa

Calculated MW

97kDa

Category

Primary antibody

Applications

ELISA, WB

Cross-Reactivity

Mouse, Rat

Background

This gene encodes a microtubule-associated serine/threonine kinase. Mutations at this locus have been associated with autosomal dominant thrombocytopenia, also known as thrombocytopenia-2. Alternatively spliced transcript variants have been described for this locus.

Recommended Dilutions

WB 1:500 - 1:2000

Immunogen Information

Gene ID

84930

Swiss Prot

Q96GX5

Immunogen

Recombinant fusion protein containing a sequence corresponding to amino acids 580-879 of human MASTL (NP_001165774.1).

Synonyms

GW; GWL; THC2; MAST-L; GREATWALL; MASTL

Contact

 | www.abclonal.com

Product Information

Source

Rabbit

Isotype

IgG

Purification

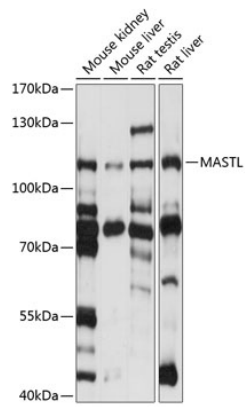
Affinity purification

Storage

Store at -20°C. Avoid freeze / thaw cycles.

Buffer: PBS with 0.01% thimerosal, 50% glycerol, pH7.3.

Validation Data



Western blot analysis of extracts of various cell lines, using MASTL antibody (A14294) at 1:1000 dilution.

Secondary antibody: HRP Goat Anti-Rabbit IgG (H+L) (AS014) at 1:10000 dilution.

Lysates/proteins: 25µg per lane.

Blocking buffer: 3% nonfat dry milk in TBST.

Detection: ECL Basic Kit (RM00020).

Exposure time: 10s.