

PLP1 Rabbit pAb

Catalog No.: A14251

Basic Information

Catalog No.

A14251

Observed MW

34kDa

Calculated MW

26kDa/30kDa

Category

Primary antibody

Applications

WB

Cross-Reactivity

Human, Mouse

Recommended Dilutions

WB 1:500 - 1:2000

Background

This gene encodes a transmembrane proteolipid protein that is the predominant component of myelin. The encoded protein may play a role in the compaction, stabilization, and maintenance of myelin sheaths, as well as in oligodendrocyte development and axonal survival. Mutations in this gene cause Pelizaeus-Merzbacher disease and spastic paraplegia type 2. Alternatively splicing results in multiple transcript variants, including the DM20 splice variant.

Immunogen Information

Gene ID

5354

Swiss Prot

P60201

Immunogen

Recombinant fusion protein containing a sequence corresponding to amino acids 145-210 of human PLP1 (NP_955772.1).

Synonyms

PLP1;GPM6C;HLD1;MMPL;PLP;PLP/DM20;PMD;SPG2

Contact

 | www.abclonal.com

Product Information

Source

Rabbit

Isotype

IgG

Purification

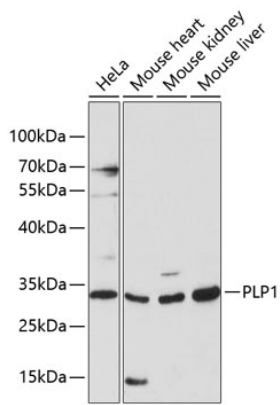
Affinity purification

Storage

Store at -20°C. Avoid freeze / thaw cycles.

Buffer: PBS with 0.02% sodium azide,50% glycerol,pH7.3.

Validation Data



Western blot analysis of extracts of various cell lines, using PLP1 antibody (A14251) at 1:3000 dilution.

Secondary antibody: HRP Goat Anti-Rabbit IgG (H+L) (AS014) at 1:10000 dilution.

Lysates/proteins: 25ug per lane.

Blocking buffer: 3% nonfat dry milk in TBST.

Detection: ECL Basic Kit (RM00020).

Exposure time: 90s.