

A14250

Leader in Biomolecular Solutions for Life Science



# PCDH8 Rabbit pAb

Catalog No.: A14250

## Basic Information

### Observed MW

113kDa

### Calculated MW

113kDa

### Category

Polyclonal Antibody

### Applications

WB, ELISA

### Cross-Reactivity

Human, Mouse, Rat

## Background

This gene belongs to the protocadherin gene family, a subfamily of the cadherin superfamily. The gene encodes an integral membrane protein that is thought to function in cell adhesion in a CNS-specific manner. Unlike classical cadherins, which are generally encoded by 15-17 exons, this gene includes only 3 exons. Notable is the large first exon encoding the extracellular region, including 6 cadherin domains and a transmembrane region. Alternative splicing yields isoforms with unique cytoplasmic tails.

## Recommended Dilutions

WB 1:500 - 1:2000

## Immunogen Information

### Gene ID

5100

### Swiss Prot

O95206

### Immunogen

Recombinant fusion protein containing a sequence corresponding to amino acids 450-750 of human PCDH8 (NP\_002581.2).

### Synonyms

PAPC; ARCADLIN; PCDH8

## Contact



[www.abclonal.com](http://www.abclonal.com)

## Product Information

### Source

Rabbit

### Isotype

IgG

### Purification

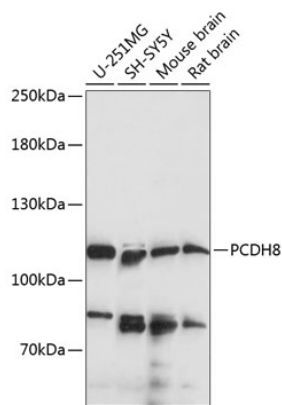
Affinity purification

### Storage

Store at -20°C. Avoid freeze / thaw cycles.

Buffer: PBS with 0.01% thimerosal, 50% glycerol, pH7.3.

# Validation Data



Western blot analysis of various lysates using PCDH8 Rabbit pAb (A14250) at 1:1000 dilution. Secondary antibody: HRP Goat Anti-Rabbit IgG (H+L) (AS014) at 1:10000 dilution. Lysates/proteins: 25µg per lane. Blocking buffer: 3% nonfat dry milk in TBST. Detection: ECL Basic Kit (RM00020). Exposure time: 90s.