

# FAM3B Rabbit pAb

Catalog No.: A14215

## Basic Information

---

### Observed MW

26kDa

### Calculated MW

26kDa

### Category

Primary antibody

### Applications

ELISA, WB

### Cross-Reactivity

Mouse

## Background

---

Involved in insulin secretion. Located in extracellular exosome.

## Recommended Dilutions

---

WB 1:500 - 1:2000

## Immunogen Information

---

### Gene ID

54097

### Swiss Prot

P58499

### Immunogen

Recombinant fusion protein containing a sequence corresponding to amino acids 30-235 of human FAM3B (NP\_478066.3).

### Synonyms

2-21; ORF9; PANDER; PRED44; C21orf11; C21orf76; FAM3B

## Contact

---

 | [www.abclonal.com](http://www.abclonal.com)

## Product Information

---

### Source

Rabbit

### Isotype

IgG

### Purification

Affinity purification

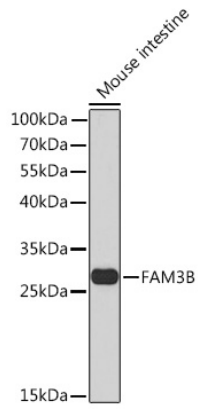
### Storage

Store at -20°C. Avoid freeze / thaw cycles.

Buffer: PBS with 0.02% sodium azide, 50% glycerol, pH 7.3.

## Validation Data

---



Western blot analysis of extracts of Mouse intestine, using FAM3B Rabbit pAb (A14215) at 1:1000 dilution.

Secondary antibody: HRP Goat Anti-Rabbit IgG (H+L) (AS014) at 1:10000 dilution.

Lysates/proteins: 25 $\mu$ g per lane.

Blocking buffer: 3% nonfat dry milk in TBST.

Detection: ECL Basic Kit (RM00020).

Exposure time: 90s.