

# PIM1 Rabbit pAb

Catalog No.: A14210

## Basic Information

### Observed MW

35kDa

### Calculated MW

36kDa

### Category

Primary antibody

### Applications

ELISA, WB, IHC-P

### Cross-Reactivity

Human, Mouse, Rat

## Background

The protein encoded by this gene belongs to the Ser/Thr protein kinase family, and PIM subfamily. This gene is expressed primarily in B-lymphoid and myeloid cell lines, and is overexpressed in hematopoietic malignancies and in prostate cancer. It plays a role in signal transduction in blood cells, contributing to both cell proliferation and survival, and thus provides a selective advantage in tumorigenesis. Both the human and orthologous mouse genes have been reported to encode two isoforms (with preferential cellular localization) resulting from the use of alternative in-frame translation initiation codons, the upstream non-AUG (CUG) and downstream AUG codons (PMIDs:16186805, 1825810).

## Recommended Dilutions

<b>WB</b>	1:1000 - 1:5000
<b>IHC-P</b>	1:50 - 1:200

## Immunogen Information

<b>Gene ID</b>	<b>Swiss Prot</b>
5292	P11309

### Immunogen

Recombinant fusion protein containing a sequence corresponding to amino acids 1-313 of human PIM1 (NP\_001230115.1).

### Synonyms

PIM; PIM1

## Contact

 | [www.abclonal.com](http://www.abclonal.com)

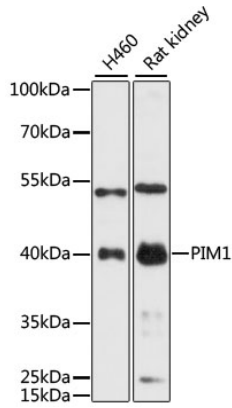
## Product Information

<b>Source</b>	<b>Isotype</b>	<b>Purification</b>
Rabbit	IgG	Affinity purification

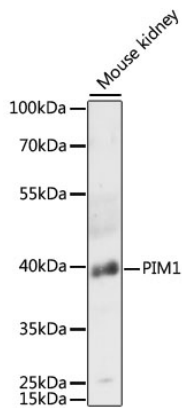
### Storage

Store at -20°C. Avoid freeze / thaw cycles.  
Buffer: PBS with 0.01% thimerosal, 50% glycerol, pH7.3.

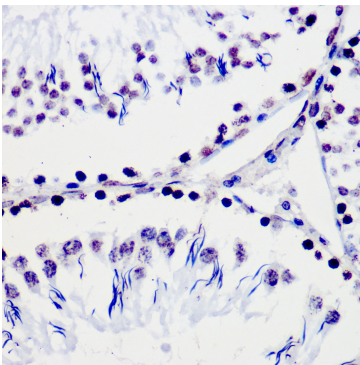
## Validation Data



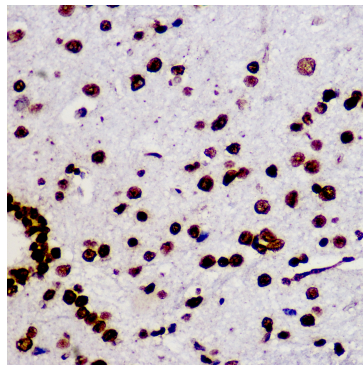
Western blot analysis of various lysates using PIM1 Rabbit pAb (A14210) at 1:3000 dilution. Secondary antibody: HRP Goat Anti-Rabbit IgG (H+L) (AS014) at 1:10000 dilution. Lysates/proteins: 25µg per lane. Blocking buffer: 3% nonfat dry milk in TBST. Detection: ECL Basic Kit (RM00020). Exposure time: 90s.



Western blot analysis of lysates from mouse kidney, using PIM1 Rabbit pAb (A14210) at 1:3000 dilution. Secondary antibody: HRP Goat Anti-Rabbit IgG (H+L) (AS014) at 1:10000 dilution. Lysates/proteins: 25µg per lane. Blocking buffer: 3% nonfat dry milk in TBST. Detection: ECL Enhanced Kit (RM00021). Exposure time: 30s.



Immunohistochemistry analysis of PIM1 in paraffin-embedded rat testis tissue using PIM1 Rabbit pAb (A14210) at a dilution of 1:100 (40x lens). Microwave antigen retrieval was performed with 0.01 M PBS buffer (pH 7.2±0.2) prior to IHC staining.



Immunohistochemistry analysis of PIM1 in paraffin-embedded mouse spinal cord tissue using PIM1 Rabbit pAb (A14210) at a dilution of 1:100 (40x lens). Microwave antigen retrieval was performed with 0.01 M PBS buffer (pH 7.2±0.2) prior to IHC staining.