

# ELMOD2 Rabbit pAb

Catalog No.: A14205

## Basic Information

---

### Observed MW

35kDa

### Calculated MW

35kDa

### Category

Primary antibody

### Applications

ELISA, WB

### Cross-Reactivity

Mouse

## Background

---

This gene encodes one of six engulfment and motility (ELMO) domain-containing proteins. This gene is thought to play a role in antiviral responses. Mutations in this gene may be involved in the cause of familial idiopathic pulmonary fibrosis.

## Recommended Dilutions

---

**WB** 1:500 - 1:2000

## Immunogen Information

---

### Gene ID

255520

### Swiss Prot

Q8IZ81

### Immunogen

Recombinant fusion protein containing a sequence corresponding to amino acids 24-293 of human ELMOD2 (NP\_714913.1).

### Synonyms

9830169G11Rik; ELMOD2

## Contact

---

 | [www.abclonal.com](http://www.abclonal.com)

## Product Information

---

### Source

Rabbit

### Isotype

IgG

### Purification

Affinity purification

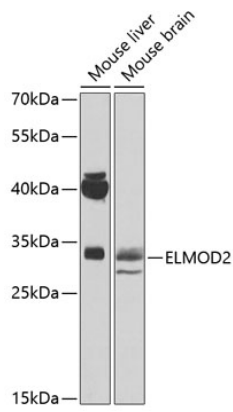
### Storage

Store at -20°C. Avoid freeze / thaw cycles.

Buffer: PBS with 0.02% sodium azide, 50% glycerol, pH7.3.

## Validation Data

---



Western blot analysis of extracts of various cell lines, using ELMOD2 antibody (A14205) at 1:500 dilution.

Secondary antibody: HRP Goat Anti-Rabbit IgG (H+L) (AS014) at 1:10000 dilution.

Lysates/proteins: 25µg per lane.

Blocking buffer: 3% nonfat dry milk in TBST.

Detection: ECL Basic Kit (RM00020).

Exposure time: 90s.