

A14166

Leader in Biomolecular Solutions for Life Science



METTL2A Rabbit pAb

Catalog No.: A14166

1 Publications

Basic Information

Observed MW

Calculated MW

44kDa

Category

Mouse Monoclonal Antibody

Applications

IF/ICC,ELISA

Cross-Reactivity

Human,Mouse,Rat

Background

Enables tRNA (cytosine-3-)-methyltransferase activity. Involved in tRNA methylation.

Recommended Dilutions

IF/ICC 1:50 - 1:200

Immunogen Information

Gene ID

339175

Swiss Prot

Q96IZ6

Immunogen

Recombinant fusion protein containing a sequence corresponding to amino acids 139-378 of human METTL2A (NP_859076.3).

Synonyms

METTL2; METTL2A

Contact



www.abclonal.com

Product Information

Source

Rabbit

Isotype

IgG

Purification

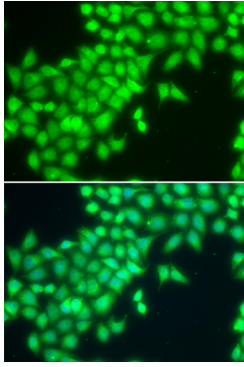
Affinity purification

Storage

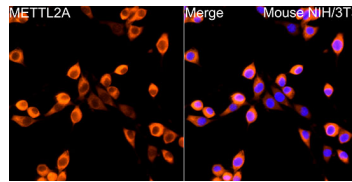
Store at -20°C. Avoid freeze / thaw cycles.

Buffer: PBS with 0.02% sodium azide,50% glycerol,pH7.3.

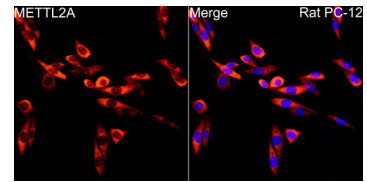
Validation Data



Immunofluorescence analysis of MCF-7 cells using METTL2A antibody (A14166). Blue: DAPI for nuclear staining.



Immunofluorescence analysis of NIH/3T3 cells using METTL2A Rabbit pAb (A14166) at dilution of 1:200 (40x lens). Blue: DAPI for nuclear staining.



Immunofluorescence analysis of PC-12 cells using METTL2A Rabbit pAb (A14166) at dilution of 1:200 (40x lens). Blue: DAPI for nuclear staining.