

# RASSF6 Rabbit pAb

Catalog No.: A14163

## Basic Information

### Observed MW

50kDa

### Calculated MW

43kDa

### Category

Primary antibody

### Applications

ELISA, WB

### Cross-Reactivity

Human, Mouse

## Background

This gene encodes a member of the Ras-association domain family (RASSF). Members of this family form the core of a highly conserved tumor suppressor network, the Salvador-Warts-Hippo (SWH) pathway. The protein encoded by this gene is a Ras effector protein that induces apoptosis. A genomic region containing this gene has been linked to susceptibility to viral bronchiolitis. Alternative splicing results in multiple transcript variants and protein isoforms.

## Recommended Dilutions

WB 1:500 - 1:2000

## Immunogen Information

### Gene ID

166824

### Swiss Prot

Q6ZTQ3

### Immunogen

Recombinant fusion protein containing a sequence corresponding to amino acids 1-303 of human RASSF6 (NP\_001257320.1).

### Synonyms

RASSF6

## Contact

 | [www.abclonal.com](http://www.abclonal.com)

## Product Information

### Source

Rabbit

### Isotype

IgG

### Purification

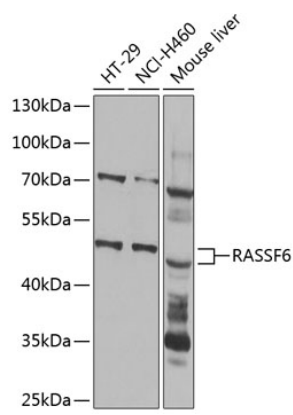
Affinity purification

### Storage

Store at -20°C. Avoid freeze / thaw cycles.

Buffer: PBS with 0.02% sodium azide, 50% glycerol, pH 7.3.

# Validation Data



Western blot analysis of extracts of various cell lines, using RASSF6 antibody (A14163) at 1:1000 dilution.  
Secondary antibody: HRP Goat Anti-Rabbit IgG (H+L) (A5014) at 1:10000 dilution.  
Lysates/proteins: 25µg per lane.  
Blocking buffer: 3% nonfat dry milk in TBST.  
Detection: ECL Basic Kit (RM00020).  
Exposure time: 15s.