

## HSP20/HSPB6 Rabbit pAb

Catalog No.: A14158

### Basic Information

#### Observed MW

17kDa/24kDa

#### Calculated MW

17kDa

#### Category

Primary antibody

#### Applications

ELISA, WB

#### Cross-Reactivity

Human, Mouse, Rat

### Background

This locus encodes a heat shock protein. The encoded protein likely plays a role in smooth muscle relaxation.

### Recommended Dilutions

WB 1:500 - 1:2000

### Immunogen Information

#### Gene ID

126393

#### Swiss Prot

O14558

#### Immunogen

Recombinant fusion protein containing a sequence corresponding to amino acids 1-160 of human HSP20/HSP20/HSPB6 (NP\_653218.1).

#### Synonyms

HEL55; Hsp20; PPP1R91; HSP20/HSPB6

### Contact

 | [www.abclonal.com](http://www.abclonal.com)

### Product Information

#### Source

Rabbit

#### Isotype

IgG

#### Purification

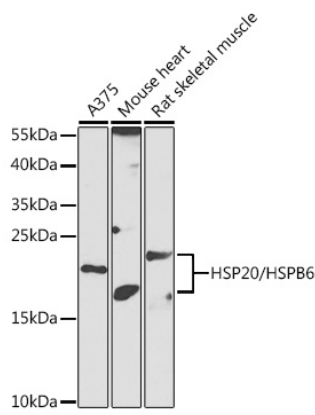
Affinity purification

#### Storage

Store at -20°C. Avoid freeze / thaw cycles.

Buffer: PBS with 0.02% sodium azide, 50% glycerol, pH7.3.

# Validation Data



Western blot analysis of extracts of various cell lines, using HSP20/HSP20/HSPB6 antibody (A14158) at 1:1000 dilution.  
Secondary antibody: HRP Goat Anti-Rabbit IgG (H+L) (AS014) at 1:10000 dilution.  
Lysates/proteins: 25µg per lane.  
Blocking buffer: 3% nonfat dry milk in TBST.  
Detection: ECL Enhanced Kit (RM00021).  
Exposure time: 90s.