

A14140

Leader in Biomolecular Solutions for Life Science



## SETD5 Rabbit pAb

Catalog No.: A14140

### Basic Information

#### Observed MW

**Calculated MW**  
158kDa

#### Category

Mouse Monoclonal Antibody

#### Applications

IF/ICC,ELISA

#### Cross-Reactivity

Human

### Background

This function of this gene has yet to be determined but based on sequence similarity to other SET domain proteins it may function as a histone methyltransferase. Mutations in this gene have been associated with an autosomal dominant form of intellectual disability. Alternative splicing results in multiple transcript variants encoding different isoforms.

### Recommended Dilutions

IF/ICC 1:50 - 1:200

### Immunogen Information

**Gene ID**  
55209

**Swiss Prot**  
Q9C0A6

#### Immunogen

Recombinant fusion protein containing a sequence corresponding to amino acids 520-740 of human SETD5 (NP\_001073986.1).

#### Synonyms

MRD23; SETD5A; SETD5

### Contact



[www.abclonal.com](http://www.abclonal.com)

### Product Information

**Source**  
Rabbit

**Isotype**  
IgG

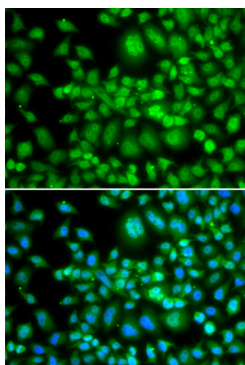
**Purification**  
Affinity purification

#### Storage

Store at -20°C. Avoid freeze / thaw cycles.  
Buffer: PBS with 0.02% sodium azide,50% glycerol,pH7.3.

## Validation Data

---



Immunofluorescence analysis of MCF-7 cells using SETD5 antibody (A14140). Blue: DAPI for nuclear staining.