

# HLA-DPB1 Rabbit pAb

Catalog No.: A1412

## Basic Information

**Observed MW**

25-35kDa

**Calculated MW**

29kDa

**Category**

Primary antibody

**Applications**

ELISA, WB, IHC-P

**Cross-Reactivity**

Human, Mouse

## Background

HLA-DPB belongs to the HLA class II beta chain paralogues. This class II molecule is a heterodimer consisting of an alpha (DPA) and a beta chain (DPB), both anchored in the membrane. It plays a central role in the immune system by presenting peptides derived from extracellular proteins. Class II molecules are expressed in antigen presenting cells (APC: B lymphocytes, dendritic cells, macrophages). The beta chain is approximately 26-28 kDa and its gene contains 6 exons. Exon one encodes the leader peptide, exons 2 and 3 encode the two extracellular domains, exon 4 encodes the transmembrane domain and exon 5 encodes the cytoplasmic tail. Within the DP molecule both the alpha chain and the beta chain contain the polymorphisms specifying the peptide binding specificities, resulting in up to 4 different molecules.

## Recommended Dilutions

|              |                |
|--------------|----------------|
| <b>WB</b>    | 1:500 - 1:1000 |
| <b>IHC-P</b> | 1:50 - 1:200   |

## Immunogen Information

|                |                   |
|----------------|-------------------|
| <b>Gene ID</b> | <b>Swiss Prot</b> |
| 3115           | P04440            |

**Immunogen**

Recombinant fusion protein containing a sequence corresponding to amino acids 30-225 of human HLA-DPB1 (NP\_002112.3).

**Synonyms**

DPB1; HLA-DP; HLA-DPB; HLA-DP1B; HLA-DPB1

## Contact

 | [www.abclonal.com](http://www.abclonal.com)

## Product Information

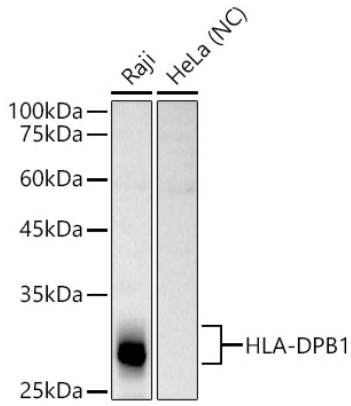
|               |                |                       |
|---------------|----------------|-----------------------|
| <b>Source</b> | <b>Isotype</b> | <b>Purification</b>   |
| Rabbit        | IgG            | Affinity purification |

**Storage**

Store at -20°C. Avoid freeze / thaw cycles.

Buffer: PBS with 0.02% sodium azide, 50% glycerol, pH7.3.

## Validation Data



Western blot analysis of various lysates, using HLA-DPB1 Rabbit pAb antibody (A1412) at 1:1000 dilution.

Secondary antibody: HRP Goat Anti-Rabbit IgG (H+L) (AS014) at 1:10000 dilution.

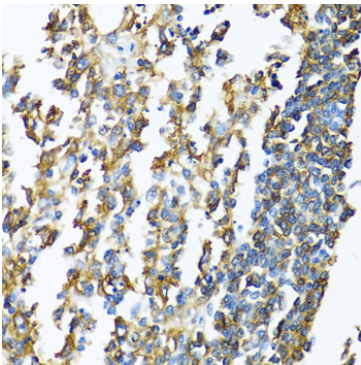
Lysates/proteins: 25µg per lane.

Blocking buffer: 3% nonfat dry milk in TBST.

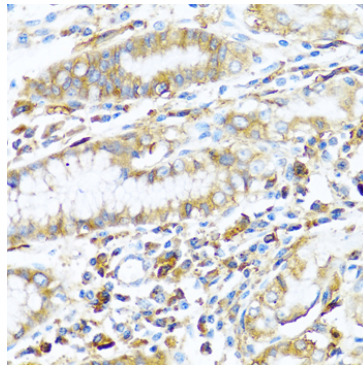
Detection: ECL Basic Kit (RM00020).

Negative control (NC): HeLa

Exposure time: 10s.



Immunohistochemistry analysis of paraffin-embedded human lymphonodus using HLA-DPB1 antibody (A1412) at dilution of 1:100 (40x lens). Perform microwave antigen retrieval with 10 mM PBS buffer pH 7.2 before commencing with IHC staining protocol.



Immunohistochemistry analysis of paraffin-embedded human stomach using HLA-DPB1 antibody (A1412) at dilution of 1:100 (40x lens). Perform microwave antigen retrieval with 10 mM PBS buffer pH 7.2 before commencing with IHC staining protocol.