

STAU2 Rabbit pAb

Catalog No.: A14117

Basic Information

Observed MW

49kDa

Calculated MW

11kDa/34kDa/43kDa/52kDa/55kDa/59kDa/62kDa

Category

Primary antibody

Applications

WB,IF/ICC

Cross-Reactivity

Human, Mouse, Rat

Background

Staufen homolog 2 is a member of the family of double-stranded RNA (dsRNA)-binding proteins involved in the transport and/or localization of mRNAs to different subcellular compartments and/or organelles. These proteins are characterized by the presence of multiple dsRNA-binding domains which are required to bind RNAs having double-stranded secondary structures. Staufen homolog 2 shares 48.5% and 59.9% similarity with drosophila and human staufen, respectively. The exact function of Staufen homolog 2 is not known, but since it contains 3 copies of conserved dsRNA binding domain, it could be involved in double-stranded RNA binding events. Several transcript variants encoding different isoforms have been found for this gene.

Recommended Dilutions

WB	1:500 - 1:2000
IF/ICC	1:50 - 1:200

Immunogen Information

Gene ID	Swiss Prot
27067	Q9NUL3

Immunogen

A synthetic peptide corresponding to a sequence within amino acids 300-400 of human STAU2 (NP_001157852.1).

Synonyms

STAU2;39K2;39K3

Contact

 | www.abclonal.com

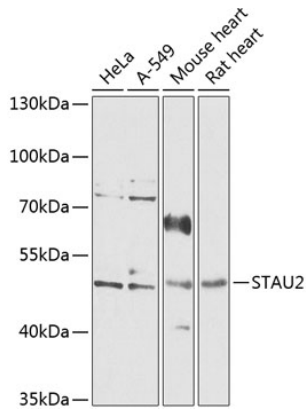
Product Information

Source	Isotype	Purification
Rabbit	IgG	Affinity purification

Storage

Store at -20°C. Avoid freeze / thaw cycles.
Buffer: PBS with 0.02% sodium azide,50% glycerol,pH7.3.

Validation Data



Western blot analysis of extracts of various cell lines, using STAU2 antibody (A14117) at 1:1000 dilution.

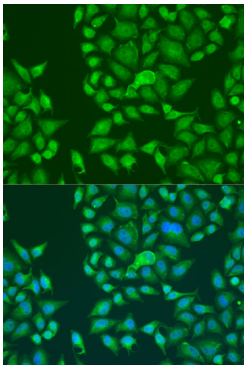
Secondary antibody: HRP Goat Anti-Rabbit IgG (H+L) (AS014) at 1:10000 dilution.

Lysates/proteins: 25ug per lane.

Blocking buffer: 3% nonfat dry milk in TBST.

Detection: ECL Basic Kit (RM00020).

Exposure time: 30s.



Immunofluorescence analysis of U2OS cells using STAU2 antibody (A14117) at dilution of 1:100. Blue: DAPI for nuclear staining.