

# PSMA5 Rabbit pAb

Catalog No.: A14053

## Basic Information

**Observed MW**

26kDa

**Calculated MW**

26kDa

**Category**

Primary antibody

**Applications**

ELISA, WB, IP

**Cross-Reactivity**

Human, Mouse, Rat

## Background

The proteasome is a multicatalytic proteinase complex with a highly ordered ring-shaped 20S core structure. The core structure is composed of 4 rings of 28 non-identical subunits; 2 rings are composed of 7 alpha subunits and 2 rings are composed of 7 beta subunits. Proteasomes are distributed throughout eukaryotic cells at a high concentration and cleave peptides in an ATP/ubiquitin-dependent process in a non-lysosomal pathway. An essential function of a modified proteasome, the immunoproteasome, is the processing of class I MHC peptides. This gene encodes a member of the peptidase T1A family, that is a 20S core alpha subunit. Multiple alternatively spliced transcript variants encoding two distinct isoforms have been found for this gene.

## Recommended Dilutions

**WB** 1:500 - 1:2000**IP** 0.5µg-4µg antibody for  
200µg-400µg extracts of  
whole cells

## Immunogen Information

**Gene ID**

5686

**Swiss Prot**

P28066

**Immunogen**

Recombinant fusion protein containing a sequence corresponding to amino acids 1-241 of human PSMA5 (NP\_002781.2).

**Synonyms**

PSC5; ZETA; PSMA5

## Contact

 | [www.abclonal.com](http://www.abclonal.com)

## Product Information

**Source**

Rabbit

**Isotype**

IgG

**Purification**

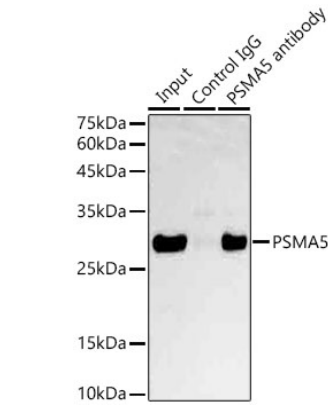
Affinity purification

**Storage**

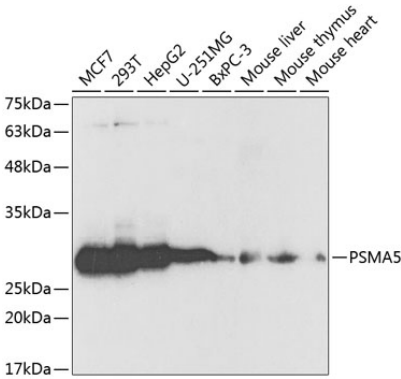
Store at -20°C. Avoid freeze / thaw cycles.

Buffer: PBS with 0.02% sodium azide, 50% glycerol, pH7.3.

Validation Data



Immunoprecipitation analysis of 600 µg extracts of Mouse liver cells using 3 µg PSMA5 antibody (A14053). Western blot was performed from the immunoprecipitate using PSMA5 antibody (A14053) at a dilution of 1:1000.



Western blot analysis of various lysates using PSMA5 Rabbit pAb (A14053) at 1:1000 dilution. Secondary antibody: HRP Goat Anti-Rabbit IgG (H+L) (AS014) at 1:10000 dilution. Lysates/proteins: 25µg per lane. Blocking buffer: 3% nonfat dry milk in TBST.