

PPL Rabbit pAb

Catalog No.: A14051

Basic Information

Observed MW

205kDa

Calculated MW

205kDa

Category

Primary antibody

Applications

ELISA, WB, IF/ICC

Cross-Reactivity

Human, Mouse, Rat

Background

The protein encoded by this gene is a component of desmosomes and of the epidermal cornified envelope in keratinocytes. The N-terminal domain of this protein interacts with the plasma membrane and its C-terminus interacts with intermediate filaments. Through its rod domain, this protein forms complexes with envoplakin. This protein may serve as a link between the cornified envelope and desmosomes as well as intermediate filaments. AKT1/PKB, a protein kinase mediating a variety of cell growth and survival signaling processes, is reported to interact with this protein, suggesting a possible role for this protein as a localization signal in AKT1-mediated signaling.

Recommended Dilutions

| | |
|---------------|----------------|
| WB | 1:500 - 1:2000 |
| IF/ICC | 1:100 - 1:500 |

Immunogen Information

| | |
|----------------|-------------------|
| Gene ID | Swiss Prot |
| 5493 | O60437 |

Immunogen

Recombinant fusion protein containing a sequence corresponding to amino acids 1-130 of human PPL (NP_002696.3).

Synonyms

PPL

Contact

 | www.abclonal.com

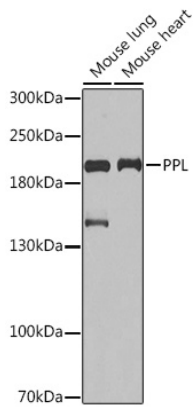
Product Information

| | | |
|---------------|----------------|-----------------------|
| Source | Isotype | Purification |
| Rabbit | IgG | Affinity purification |

Storage

Store at -20°C. Avoid freeze / thaw cycles.
Buffer: PBS with 0.02% sodium azide, 50% glycerol, pH7.3.

Validation Data



Western blot analysis of extracts of various cell lines, using PPL Rabbit pAb (A14051) at 1:1000 dilution.

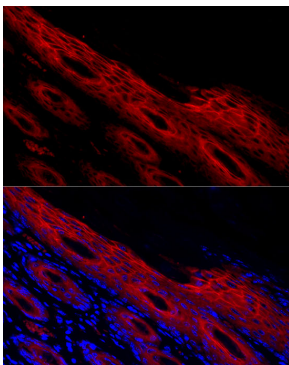
Secondary antibody: HRP Goat Anti-Rabbit IgG (H+L) (AS014) at 1:10000 dilution.

Lysates/proteins: 25µg per lane.

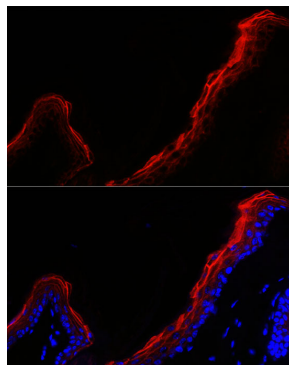
Blocking buffer: 3% nonfat dry milk in TBST.

Detection: ECL Basic Kit (RM00020).

Exposure time: 30s.



Immunofluorescence analysis of human skin cells using PPL Rabbit pAb (A14051) at dilution of 1:500 (40x lens). Blue: DAPI for nuclear staining.



Immunofluorescence analysis of mouse skin cells using PPL Rabbit pAb (A14051) at dilution of 1:500 (40x lens). Blue: DAPI for nuclear staining.