

# ILF3 Rabbit pAb

Catalog No.: A14006

## Basic Information

---

**Observed MW**

110kDa

**Calculated MW**

95kDa

**Category**

Primary antibody

**Applications**

ELISA, WB

**Cross-Reactivity**

Human, Mouse, Rat

## Background

---

This gene encodes a double-stranded RNA (dsRNA) binding protein that complexes with other proteins, dsRNAs, small noncoding RNAs, and mRNAs to regulate gene expression and stabilize mRNAs. This protein (NF90, ILF3) forms a heterodimer with a 45 kDa transcription factor (NF45, ILF2) required for T-cell expression of interleukin 2. This complex has been shown to affect the redistribution of nuclear mRNA to the cytoplasm. Knockdown of NF45 or NF90 protein retards cell growth, possibly by inhibition of mRNA stabilization. In contrast, an isoform (NF110) of this gene that is predominantly restricted to the nucleus has only minor effects on cell growth when its levels are reduced. Alternative splicing results in multiple transcript variants encoding distinct isoforms.

## Recommended Dilutions

---

WB 1:500 - 1:2000

## Immunogen Information

---

**Gene ID**

3609

**Swiss Prot**

Q12906

**Immunogen**

Recombinant fusion protein containing a sequence corresponding to amino acids 597-706 of human ILF3 (NP\_001131145.1).

**Synonyms**

CBTF; DRBF; MMP4; MPP4; NF90; NFAR; NF110; NF90a; NF90b; NF90c; NFAR2; TCP80; DRBP76; NF110b; NFAR-1; NFAR-2; NFAR90; TCP110; MPP4110; NF90ctv; NFAR110; MPHOSPH4; NF-AT-90; ILF3

## Contact

---

 | [www.abclonal.com](http://www.abclonal.com)

## Product Information

---

**Source**

Rabbit

**Isotype**

IgG

**Purification**

Affinity purification

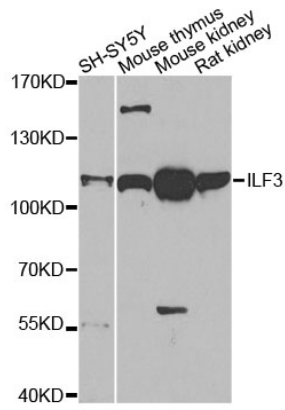
**Storage**

Store at -20°C. Avoid freeze / thaw cycles.

Buffer: PBS with 0.02% sodium azide, 50% glycerol, pH7.3.

## Validation Data

---



Western blot analysis of extracts of various cell lines, using ILF3 antibody (A14006) at 1:1000 dilution.  
Secondary antibody: HRP Goat Anti-Rabbit IgG (H+L) (AS014) at 1:10000 dilution.  
Lysates/proteins: 25µg per lane.  
Blocking buffer: 3% nonfat dry milk in TBST.  
Detection: ECL Basic Kit (RM00020).  
Exposure time: 90s.