

# DBH Rabbit pAb

Catalog No.: A13971

## Basic Information

---

**Observed MW**

Refer to figures

**Calculated MW**

69kDa

**Category**

Primary antibody

**Applications**

ELISA, WB, IHC-P

**Cross-Reactivity**

Human, Mouse, Rat

## Background

---

The protein encoded by this gene is an oxidoreductase belonging to the copper type II, ascorbate-dependent monooxygenase family. The encoded protein, expressed in neurosecretory vesicles and chromaffin granules of the adrenal medulla, catalyzes the conversion of dopamine to norepinephrine, which functions as both a hormone and as the main neurotransmitter of the sympathetic nervous system. The enzyme encoded by this gene exists in both soluble and membrane-bound forms, depending on the absence or presence, respectively, of a signal peptide. Mutations in this gene cause dopamine beta-hydroxylase deficiency in human patients, characterized by deficits in autonomic and cardiovascular function, including hypotension and ptosis. Polymorphisms in this gene may play a role in a variety of psychiatric disorders.

## Recommended Dilutions

---

<b>WB</b>	1:500 - 1:2000
<b>IHC-P</b>	1:50 - 1:100

## Immunogen Information

---

<b>Gene ID</b>	<b>Swiss Prot</b>
1621	P09172

**Immunogen**

Recombinant fusion protein containing a sequence corresponding to amino acids 388-617 of human DBH (NP\_000778.3).

**Synonyms**

DBM; ORTHYP1; DBH

## Contact

---

 | [www.abclonal.com](http://www.abclonal.com)

## Product Information

---

<b>Source</b>	<b>Isotype</b>	<b>Purification</b>
Rabbit	IgG	Affinity purification

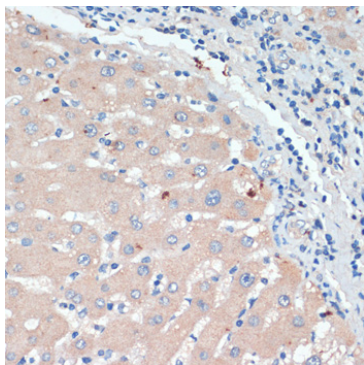
**Storage**

Store at -20°C. Avoid freeze / thaw cycles.

Buffer: PBS with 0.02% sodium azide, 50% glycerol, pH7.3.

## Validation Data

---



Immunohistochemistry analysis of paraffin-embedded human liver using DBH antibody (A13971) at dilution of 1:200 (40x lens). Perform microwave antigen retrieval with 10 mM PBS buffer pH 7.2 before commencing with IHC staining protocol.