

# CYP1B1 Rabbit pAb

Catalog No.: A13967 **1 Publications**

## Basic Information

### Observed MW

Refer to figures

### Calculated MW

61kDa

### Category

Primary antibody

### Applications

ELISA, WB, IF/ICC

### Cross-Reactivity

Human

## Background

This gene encodes a member of the cytochrome P450 superfamily of enzymes. The cytochrome P450 proteins are monooxygenases which catalyze many reactions involved in drug metabolism and synthesis of cholesterol, steroids and other lipids. The enzyme encoded by this gene localizes to the endoplasmic reticulum and metabolizes procarcinogens such as polycyclic aromatic hydrocarbons and 17beta-estradiol. Mutations in this gene have been associated with primary congenital glaucoma; therefore it is thought that the enzyme also metabolizes a signaling molecule involved in eye development, possibly a steroid.

## Recommended Dilutions

<b>WB</b>	1:500 - 1:2000
<b>IF/ICC</b>	1:50 - 1:200

## Immunogen Information

<b>Gene ID</b>	<b>Swiss Prot</b>
1545	Q16678

### Immunogen

Recombinant fusion protein containing a sequence corresponding to amino acids 244-543 of human CYP1B1 (NP\_000095.2).

### Synonyms

CP1B; ASGD6; GLC3A; CYPIB1; P4501B1; CYP1B1

## Contact

 | [www.abclonal.com](http://www.abclonal.com)

## Product Information

<b>Source</b>	<b>Isotype</b>	<b>Purification</b>
Rabbit	IgG	Affinity purification

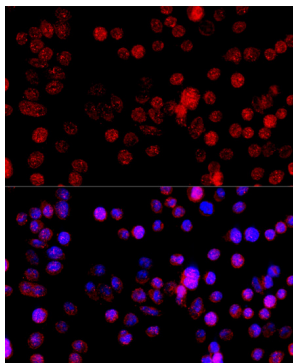
### Storage

Store at -20°C. Avoid freeze / thaw cycles.

Buffer: PBS with 0.02% sodium azide, 50% glycerol, pH 7.3.

## Validation Data

---



Immunofluorescence analysis of HeLa cells using CYP1B1 antibody (A13967) at dilution of 1:100 (40x lens). Blue: DAPI for nuclear staining.