

A13948

Leader in Biomolecular Solutions for Life Science



# ASAH1 Rabbit pAb

Catalog No.: A13948

## Basic Information

### Observed MW

40kDa

### Calculated MW

45kDa

### Category

Mouse Monoclonal Antibody

### Applications

WB,IF/ICC,ELISA

### Cross-Reactivity

Human,Mouse,Rat

## Background

This gene encodes a member of the acid ceramidase family of proteins. Alternative splicing results in multiple transcript variants, at least one of which encodes a preproprotein that is proteolytically processed. Processing of this preproprotein generates alpha and beta subunits that heterodimerize to form the mature lysosomal enzyme, which catalyzes the degradation of ceramide into sphingosine and free fatty acid. This enzyme is overexpressed in multiple human cancers and may play a role in cancer progression. Mutations in this gene are associated with the lysosomal storage disorder, Farber lipogranulomatosis, and a neuromuscular disorder, spinal muscular atrophy with progressive myoclonic epilepsy.

## Recommended Dilutions

WB	1:500 - 1:2000
IF/ICC	1:50 - 1:200

## Immunogen Information

Gene ID	Swiss Prot
427	Q13510

### Immunogen

Recombinant fusion protein containing a sequence corresponding to amino acids 140-389 of human ASAH1 (NP\_001120977.1).

### Synonyms

AC; PHP; ASAH; PHP32; ACDase; SMAPME; ASAH1

## Contact



[www.abclonal.com](http://www.abclonal.com)

## Product Information

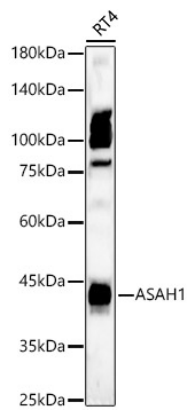
Source	Isotype	Purification
Rabbit	IgG	Affinity purification

### Storage

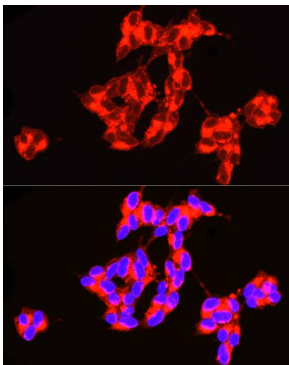
Store at -20°C. Avoid freeze / thaw cycles.  
Buffer: PBS with 0.02% sodium azide,50% glycerol,pH7.3.

## Validation Data

---



Western blot analysis of lysates from RT4 cells using ASAH1 Rabbit pAb(A13948) at 1:700 dilution.  
Secondary antibody:HRP Goat Anti-Rabbit IgG (H+L)(AS014) at 1:10000 dilution.  
Lysates/proteins: 25 µg per lane.  
Blocking buffer: 3% nonfat dry milk in TBST.  
Detection:ECL Basic Kit (RM00020).  
Exposure time:60s.



Immunofluorescence analysis of SH-SY5Y cells using ASAH1 Rabbit pAb (A13948) at dilution of 1:100 (40x lens). Blue: DAPI for nuclear staining.