

A13937

Leader in Biomolecular Solutions for Life Science



# PDE4D Rabbit pAb

Catalog No.: A13937

## Basic Information

### Observed MW

110kDa

### Calculated MW

91kDa

### Category

Polyclonal Antibody

### Applications

WB,ELISA

### Cross-Reactivity

Human,Rat

## Background

This gene encodes one of four mammalian counterparts to the fruit fly 'dunce' gene. The encoded protein has 3',5'-cyclic-AMP phosphodiesterase activity and degrades cAMP, which acts as a signal transduction molecule in multiple cell types. This gene uses different promoters to generate multiple alternatively spliced transcript variants that encode functional proteins.

## Recommended Dilutions

WB 1:500 - 1:2000

## Immunogen Information

### Gene ID

5144

### Swiss Prot

Q08499

### Immunogen

Recombinant fusion protein containing a sequence corresponding to amino acids 249-518 of human PDE4D (NP\_001184152.1).

### Synonyms

DPDE3; PDE43; STRK1; ACRDYS2; HSPDE4D; PDE4DN2; PDE4D

## Contact



[www.abclonal.com](http://www.abclonal.com)

## Product Information

### Source

Rabbit

### Isotype

IgG

### Purification

Affinity purification

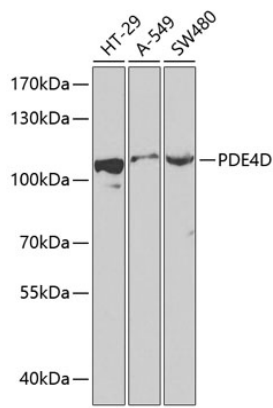
### Storage

Store at -20°C. Avoid freeze / thaw cycles.

Buffer: PBS with 0.02% sodium azide,50% glycerol,pH7.3.

## Validation Data

---



Western blot analysis of extracts of various cell lines, using PDE4D antibody (A13937) at 1:1000 dilution.  
Secondary antibody: HRP Goat Anti-Rabbit IgG (H+L) (AS014) at 1:10000 dilution.  
Lysates/proteins: 25 $\mu$ g per lane.  
Blocking buffer: 3% nonfat dry milk in TBST.