

# SMC4 Rabbit pAb

Catalog No.: A13933

## Basic Information

### Observed MW

147kDa

### Calculated MW

147kDa

### Category

Primary antibody

### Applications

ELISA, WB

### Cross-Reactivity

Human

## Background

This gene belongs to the 'structural maintenance of chromosomes' (SMC) gene family. Members of this gene family play a role in two changes in chromosome structure during mitotic segregation of chromosomes- chromosome condensation and sister chromatid cohesion. The protein encoded by this gene is likely a subunit of the 135 condensin complex, which is involved in chromosome condensation. A pseudogene related to this gene is located on chromosome 2.

## Recommended Dilutions

WB 1:500 - 1:2000

## Immunogen Information

### Gene ID

10051

### Swiss Prot

Q9NTJ3

### Immunogen

A synthetic peptide corresponding to a sequence within amino acids 1-100 of human SMC4 (NP\_001275682.1).

### Synonyms

CAPC; CAP-C; SMC-4; SMC4L1; SMC4

## Contact

 | [www.abclonal.com](http://www.abclonal.com)

## Product Information

### Source

Rabbit

### Isotype

IgG

### Purification

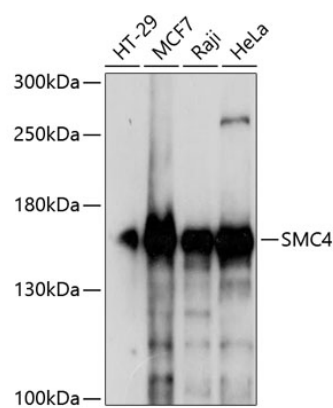
Affinity purification

### Storage

Store at -20°C. Avoid freeze / thaw cycles.

Buffer: PBS with 0.01% thimerosal, 50% glycerol, pH7.3.

# Validation Data



Western blot analysis of various lysates using SMC4 Rabbit pAb (A13933) at 1:1000 dilution.  
Secondary antibody: HRP Goat Anti-Rabbit IgG (H+L) (AS014) at 1:10000 dilution.  
Lysates/proteins: 25µg per lane.  
Blocking buffer: 3% nonfat dry milk in TBST.  
Detection: ECL Enhanced Kit (RM00021).  
Exposure time: 3s.