

# MESDC2 Rabbit pAb

Catalog No.: A13932

## Basic Information

---

### Observed MW

26kDa

### Calculated MW

26kDa

### Category

Primary antibody

### Applications

ELISA, WB

### Cross-Reactivity

Human, Mouse, Rat

## Background

---

Predicted to enable low-density lipoprotein particle receptor binding activity. Involved in ossification and protein folding. Located in endoplasmic reticulum. Implicated in osteogenesis imperfecta type 20.

## Recommended Dilutions

---

WB 1:500 - 1:2000

## Immunogen Information

---

### Gene ID

23184

### Swiss Prot

Q14696

### Immunogen

Recombinant fusion protein containing a sequence corresponding to amino acids 1-234 of human MESDC2 (NP\_055969.1).

### Synonyms

BOCA; OI20; MESDC2

## Contact

---

 | [www.abclonal.com](http://www.abclonal.com)

## Product Information

---

### Source

Rabbit

### Isotype

IgG

### Purification

Affinity purification

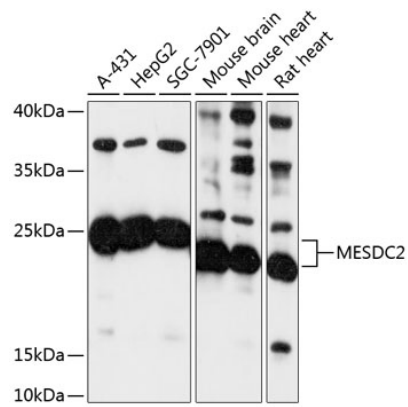
### Storage

Store at -20°C. Avoid freeze / thaw cycles.

Buffer: PBS with 0.01% thimerosal, 50% glycerol, pH7.3.

## Validation Data

---



Western blot analysis of extracts of various cell lines, using MESDC2 antibody (A13932) at 1:3000 dilution.

Secondary antibody: HRP Goat Anti-Rabbit IgG (H+L) (AS014) at 1:10000 dilution.

Lysates/proteins: 25µg per lane.

Blocking buffer: 3% nonfat dry milk in TBST.

Detection: ECL Basic Kit (RM00020).

Exposure time: 60s.