

A13892

Leader in Biomolecular Solutions for Life Science



## CRMP5/DPYSL5 Rabbit pAb

Catalog No.: A13892

### Basic Information

**Observed MW**

61kDa

**Calculated MW**

61kDa

**Category**

Polyclonal Antibody

**Applications**

WB, ELISA

**Cross-Reactivity**

Human, Rat

### Background

This gene encodes a member of the CRMP (collapsing response mediator protein) family thought to be involved in neural development. Antibodies to the encoded protein were found in some patients with neurologic symptoms who had paraneoplastic syndrome. A pseudogene of this gene is found on chromosome 11. Multiple alternatively spliced variants, encoding the same protein, have been identified.

### Recommended Dilutions

WB 1:500 - 1:2000

### Immunogen Information

**Gene ID**

56896

**Swiss Prot**

Q9BPU6

**Immunogen**

Recombinant fusion protein containing a sequence corresponding to amino acids 445-564 of human CRMP5/CRMP5/DPYSL5 (NP\_064519.2).

**Synonyms**

CV2; CRAM; CRMP5; RTSC4; Ulip6; CRMP-5; CRMP5/DPYSL5

### Contact



[www.abclonal.com](http://www.abclonal.com)

### Product Information

**Source**

Rabbit

**Isotype**

IgG

**Purification**

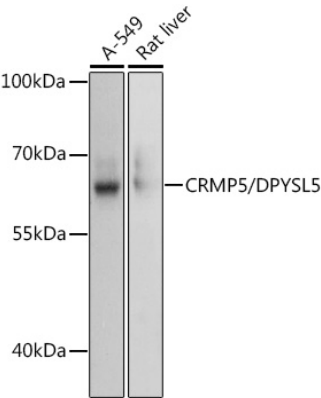
Affinity purification

**Storage**

Store at -20°C. Avoid freeze / thaw cycles.

Buffer: PBS with 0.01% thimerosal, 50% glycerol, pH7.3.

Validation Data



Western blot analysis of various lysates using CRMP5/DPYSL5 Rabbit pAb (A13892) at 1:3000 dilution.  
Secondary antibody: HRP Goat Anti-Rabbit IgG (H+L) (AS014) at 1:10000 dilution.  
Lysates/proteins: 25µg per lane.  
Blocking buffer: 3% nonfat dry milk in TBST.  
Detection: ECL Basic Kit (RM00020).  
Exposure time: 1s.