

PPAPDC3 Rabbit pAb

Catalog No.: A13882

Basic Information

Observed MW

29kDa

Calculated MW

29kDa

Category

Primary antibody

Applications

ELISA, WB

Cross-Reactivity

Human, Mouse, Rat

Background

Predicted to enable sphingosine-1-phosphate phosphatase activity. Predicted to be involved in dephosphorylation. Predicted to act upstream of or within negative regulation of myotube differentiation. Predicted to be located in endoplasmic reticulum membrane. Predicted to be integral component of membrane. Predicted to be active in membrane and nuclear envelope.

Recommended Dilutions

WB 1:500 - 1:2000

Immunogen Information

Gene ID

84814

Swiss Prot

Q8NBV4

Immunogen

Recombinant fusion protein containing a sequence corresponding to amino acids 1-70 of human PPAPDC3 (NP_116117.3).

Synonyms

NET39; C9orf67; PPAPDC3

Contact

 | www.abclonal.com

Product Information

Source

Rabbit

Isotype

IgG

Purification

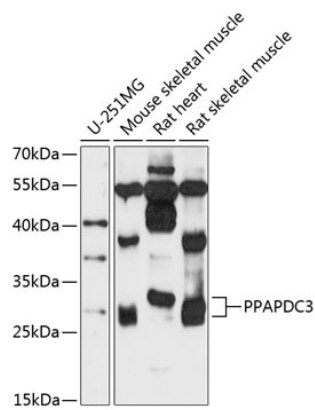
Affinity purification

Storage

Store at -20°C. Avoid freeze / thaw cycles.

Buffer: PBS with 0.02% sodium azide, 50% glycerol, pH 7.3.

Validation Data



Western blot analysis of extracts of various cell lines, using PPAPDC3 antibody (A13882) at 1:3000 dilution.
Secondary antibody: HRP Goat Anti-Rabbit IgG (H+L) (A5014) at 1:10000 dilution.
Lysates/proteins: 25µg per lane.
Blocking buffer: 3% nonfat dry milk in TBST.
Detection: ECL Enhanced Kit (RM00021).
Exposure time: 90s.