

KIF19 Rabbit pAb

Catalog No.: A13868

Basic Information

Observed MW

111kDa

Calculated MW

111kDa

Category

Primary antibody

Applications

ELISA, WB

Cross-Reactivity

Human, Mouse, Rat

Background

Predicted to enable microtubule binding activity and plus-end-directed microtubule motor activity. Predicted to be involved in axonemal microtubule depolymerization; microtubule-based movement; and plus-end specific microtubule depolymerization.

Predicted to be located in cilium. Predicted to be part of kinesin complex. Predicted to be active in microtubule.

Recommended Dilutions

WB 1:500 - 1:2000

Immunogen Information

Gene ID

124602

Swiss Prot

Q2TAC6

Immunogen

Recombinant fusion protein containing a sequence corresponding to amino acids 1-300 of human KIF19 (NP_694941.2).

Synonyms

KIF19A; KIF19

Contact

 | www.abclonal.com

Product Information

Source

Rabbit

Isotype

IgG

Purification

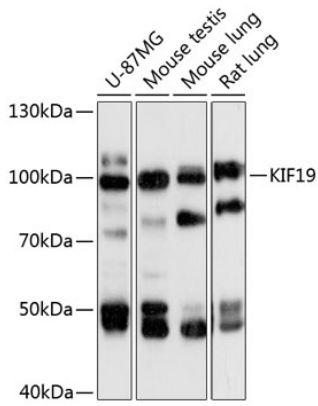
Affinity purification

Storage

Store at -20°C. Avoid freeze / thaw cycles.

Buffer: PBS with 0.01% thimerosal, 50% glycerol, pH7.3.

Validation Data



Western blot analysis of various lysates using KIF19 Rabbit pAb (A13868) at 1:3000 dilution.
Secondary antibody: HRP Goat Anti-Rabbit IgG (H+L) (AS014) at 1:10000 dilution.
Lysates/proteins: 25µg per lane.
Blocking buffer: 3% nonfat dry milk in TBST.
Detection: ECL Basic Kit (RM00020).
Exposure time: 10s.