

CRACR2A Rabbit pAb

Catalog No.: A13838

Basic Information

Observed MW

45kDa

Calculated MW

83kDa

Category

Primary antibody

Applications

ELISA, WB, IHC-P

Cross-Reactivity

Human, Mouse

Background

Enables GTPase activity and calcium ion binding activity. Involved in several processes, including activation of store-operated calcium channel activity; positive regulation of JNK cascade; and store-operated calcium entry. Located in several cellular components, including Golgi apparatus; Weibel-Palade body; and immunological synapse.

Recommended Dilutions

WB	1:500 - 1:2000
IHC-P	1:50 - 1:200

Immunogen Information

Gene ID	Swiss Prot
84766	Q9BSW2

Immunogen

Recombinant fusion protein containing a sequence corresponding to amino acids 1-200 of human CRACR2A (NP_001138430.1).

Synonyms

RAB46; EFCAB4B; CRACR2A

Contact

 | www.abclonal.com

Product Information

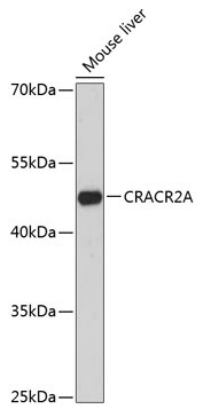
Source	Isotype	Purification
Rabbit	IgG	Affinity purification

Storage

Store at -20°C. Avoid freeze / thaw cycles.

Buffer: PBS with 0.01% thimerosal, 50% glycerol, pH7.3.

Validation Data



Western blot analysis of lysates from mouse liver, using CRACR2A Rabbit pAb (A13838) at 1:3000 dilution.

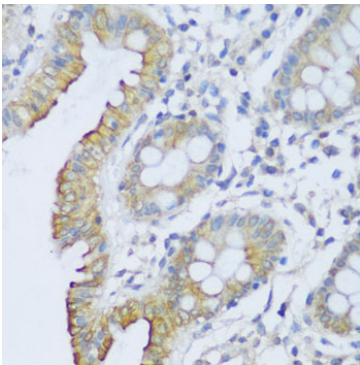
Secondary antibody: HRP Goat Anti-Rabbit IgG (H+L) (AS014) at 1:10000 dilution.

Lysates/proteins: 25µg per lane.

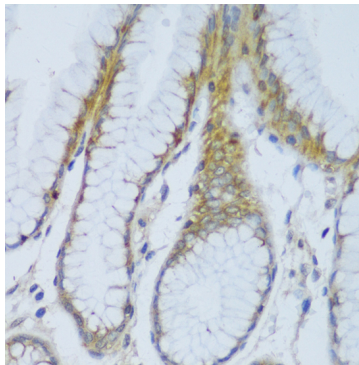
Blocking buffer: 3% nonfat dry milk in TBST.

Detection: ECL Basic Kit (RM00020).

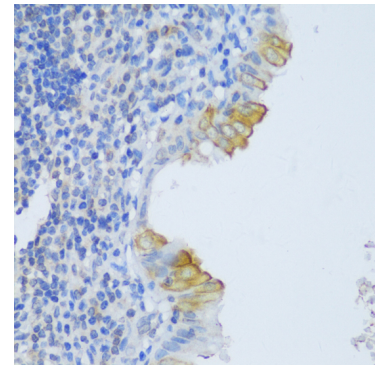
Exposure time: 90s.



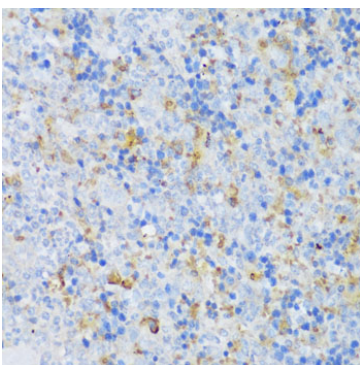
Immunohistochemistry analysis of CRACR2A in paraffin-embedded human colon using CRACR2A Rabbit pAb (A13838) at dilution of 1:150 (40x lens). Perform microwave antigen retrieval with 10 mM PBS buffer pH 7.2 before commencing with IHC staining protocol.



Immunohistochemistry analysis of CRACR2A in paraffin-embedded human stomach using CRACR2A Rabbit pAb (A13838) at dilution of 1:150 (40x lens). Perform microwave antigen retrieval with 10 mM PBS buffer pH 7.2 before commencing with IHC staining protocol.



Immunohistochemistry analysis of CRACR2A in paraffin-embedded human appendix using CRACR2A Rabbit pAb (A13838) at dilution of 1:150 (40x lens). Perform microwave antigen retrieval with 10 mM PBS buffer pH 7.2 before commencing with IHC staining protocol.



Immunohistochemistry analysis of CRACR2A in paraffin-embedded mouse spleen using CRACR2A Rabbit pAb (A13838) at dilution of 1:150 (40x lens). Perform microwave antigen retrieval with 10 mM PBS buffer pH 7.2 before commencing with IHC staining protocol.