

ISY1 Rabbit pAb

Catalog No.: A13828

Basic Information

Observed MW

38kDa

Calculated MW

33kDa

Category

Primary antibody

Applications

ELISA, WB

Cross-Reactivity

Human, Mouse

Background

Enables RNA binding activity. Involved in mRNA splicing, via spliceosome. Located in nucleus. Part of U2-type catalytic step 1 spliceosome and catalytic step 2 spliceosome.

Recommended Dilutions

WB 1:500 - 1:2000

Immunogen Information

Gene ID

57461

Swiss Prot

Q9ULR0

Immunogen

Recombinant fusion protein containing a sequence corresponding to amino acids 1-307 of human ISY1 (NP_001186398.1).

Synonyms

FSAP33; ISY1

Contact

 | www.abclonal.com

Product Information

Source

Rabbit

Isotype

IgG

Purification

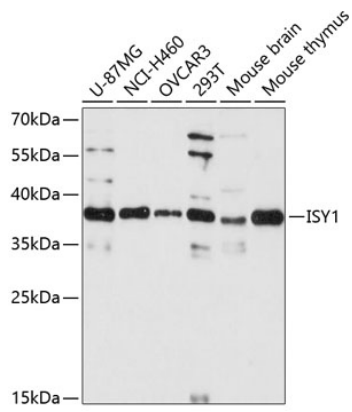
Affinity purification

Storage

Store at -20°C. Avoid freeze / thaw cycles.

Buffer: PBS with 0.01% thimerosal, 50% glycerol, pH7.3.

Validation Data



Western blot analysis of various lysates using ISY1 Rabbit pAb (A13828) at 1:3000 dilution.
Secondary antibody: HRP Goat Anti-Rabbit IgG (H+L) (AS014) at 1:10000 dilution.
Lysates/proteins: 25µg per lane.
Blocking buffer: 3% nonfat dry milk in TBST.
Detection: ECL Basic Kit (RM00020).
Exposure time: 90s.