

LYZL1 Rabbit pAb

Catalog No.: A13823

Basic Information

Observed MW

17kDa

Calculated MW

17kDa

Category

Primary antibody

Applications

ELISA, WB

Cross-Reactivity

Rat

Background

Predicted to enable lysozyme activity. Predicted to be located in extracellular region.

Recommended Dilutions

WB 1:500 - 1:2000

Immunogen Information

Gene ID

84569

Swiss Prot

Q6UWQ5

Immunogen

Recombinant fusion protein containing a sequence corresponding to amino acids 1-194 of human LYZL1 (NP_115906.3).

Synonyms

LYC2; LYZD1; KAAG648; PRO1278; bA534G20.1; LYZL1

Contact

 | www.abclonal.com

Product Information

Source

Rabbit

Isotype

IgG

Purification

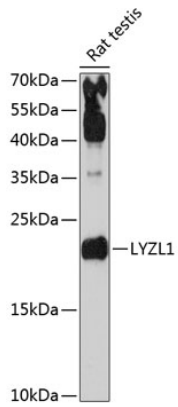
Affinity purification

Storage

Store at -20°C. Avoid freeze / thaw cycles.

Buffer: PBS with 0.01% thimerosal, 50% glycerol, pH7.3.

Validation Data



Western blot analysis of extracts of rat testis, using LYZL1 antibody (A13823) at 1:3000 dilution.
Secondary antibody: HRP Goat Anti-Rabbit IgG (H+L) (AS014) at 1:10000 dilution.
Lysates/proteins: 25µg per lane.
Blocking buffer: 3% nonfat dry milk in TBST.
Detection: ECL Basic Kit (RM00020).
Exposure time: 90s.