

AP3B2 Rabbit pAb

Catalog No.: A13809

Basic Information

Observed MW

140kDa

Calculated MW

119kDa

Category

Primary antibody

Applications

ELISA, WB

Cross-Reactivity

Human

Background

Adaptor protein complex 3 (AP-3 complex) is a heterotrimeric protein complex involved in the formation of clathrin-coated synaptic vesicles. The protein encoded by this gene represents the beta subunit of the neuron-specific AP-3 complex and was first identified as the target antigen in human paraneoplastic neurologic disorders. The encoded subunit binds clathrin and is phosphorylated by a casein kinase-like protein, which mediates synaptic vesicle coat assembly. Defects in this gene are a cause of early-onset epileptic encephalopathy.

Recommended Dilutions

WB 1:500 - 1:2000

Immunogen Information

Gene ID

8120

Swiss Prot

Q13367

Immunogen

Recombinant fusion protein containing a sequence corresponding to amino acids 833-1082 of human AP3B2 (NP_004635.2).

Synonyms

DEE48; NAPT8; EIEE48; AP3B2

Contact

 | www.abclonal.com

Product Information

Source

Rabbit

Isotype

IgG

Purification

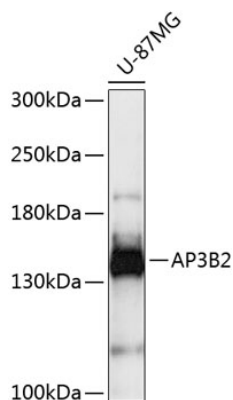
Affinity purification

Storage

Store at -20°C. Avoid freeze / thaw cycles.

Buffer: PBS with 0.01% thimerosal, 50% glycerol, pH7.3.

Validation Data



Western blot analysis of extracts of U-87MG cells, using AP3B2 antibody (A13809) at 1:3000 dilution.
Secondary antibody: HRP Goat Anti-Rabbit IgG (H+L) (A5014) at 1:10000 dilution.
Lysates/proteins: 25µg per lane.
Blocking buffer: 3% nonfat dry milk in TBST.
Detection: ECL Basic Kit (RM00020).
Exposure time: 15s.