

# RPS6KC1 Rabbit pAb

Catalog No.: A13807

## Basic Information

### Observed MW

120kDa

### Calculated MW

119kDa

### Category

Primary antibody

### Applications

ELISA, WB

### Cross-Reactivity

Human

## Background

Sphingosine kinase catalyzes the formation of sphingosine 1 phosphate, a lipid cellular messenger. The protein encoded by this gene can bind to sphingosine kinase and to phosphatidylinositol 3-phosphate, suggesting a role in sphingosine 1 phosphate signaling. The encoded protein can also bind to peroxiredoxin-3 and may help transport it to mitochondria.

## Recommended Dilutions

WB 1:500 - 1:2000

## Immunogen Information

### Gene ID

26750

### Swiss Prot

Q96538

### Immunogen

Recombinant fusion protein containing a sequence corresponding to amino acids 200-400 of human RPS6KC1 (NP\_036556.2).

### Synonyms

RSKL1; RPK118; S6PKh1; humS6PKh1; S6K-delta-1; RPS6KC1

## Contact

 | [www.abclonal.com](http://www.abclonal.com)

## Product Information

### Source

Rabbit

### Isotype

IgG

### Purification

Affinity purification

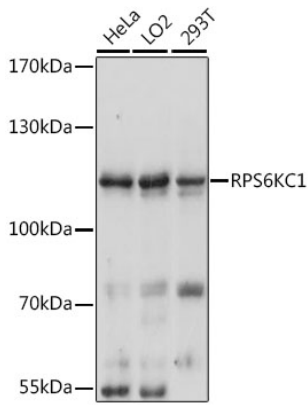
### Storage

Store at -20°C. Avoid freeze / thaw cycles.

Buffer: PBS with 0.01% thimerosal, 50% glycerol, pH7.3.

## Validation Data

---



Western blot analysis of extracts of various cell lines, using RPS6KC1 antibody (A13807) at 1:3000 dilution.

Secondary antibody: HRP Goat Anti-Rabbit IgG (H+L) (AS014) at 1:10000 dilution.

Lysates/proteins: 25µg per lane.

Blocking buffer: 3% nonfat dry milk in TBST.

Detection: ECL Basic Kit (RM00020).

Exposure time: 10s.