

# KIF5C Rabbit pAb

Catalog No.: A13801

## Basic Information

---

### Observed MW

109kDa

### Calculated MW

109kDa

### Category

Primary antibody

### Applications

ELISA, WB

### Cross-Reactivity

Human

## Background

---

The protein encoded by this gene is a kinesin heavy chain subunit involved in the transport of cargo within the central nervous system. The encoded protein, which acts as a tetramer by associating with another heavy chain and two light chains, interacts with protein kinase CK2. Mutations in this gene have been associated with complex cortical dysplasia with other brain malformations-2. Two transcript variants, one protein-coding and the other non-protein coding, have been found for this gene.

## Recommended Dilutions

---

WB 1:500 - 1:2000

## Immunogen Information

---

### Gene ID

3800

### Swiss Prot

O60282

### Immunogen

Recombinant fusion protein containing a sequence corresponding to amino acids 510-590 of human KIF5C (NP\_004513.1).

### Synonyms

KINN; NKHC; NKHC2; CDCBM2; NKHC-2; KIF5C

## Contact

---

 | [www.abclonal.com](http://www.abclonal.com)

## Product Information

---

### Source

Rabbit

### Isotype

IgG

### Purification

Affinity purification

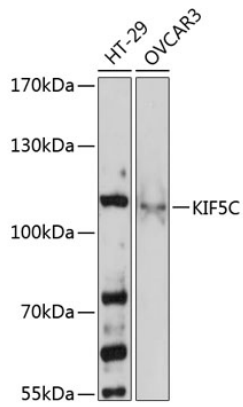
### Storage

Store at -20°C. Avoid freeze / thaw cycles.

Buffer: PBS with 0.01% thimerosal, 50% glycerol, pH7.3.

## Validation Data

---



Western blot analysis of extracts of various cell lines, using KIF5C antibody (A13801) at 1:3000 dilution.

Secondary antibody: HRP Goat Anti-Rabbit IgG (H+L) (AS014) at 1:10000 dilution.

Lysates/proteins: 25µg per lane.

Blocking buffer: 3% nonfat dry milk in TBST.

Detection: ECL Basic Kit (RM00020).

Exposure time: 10s.