

RIN1 Rabbit pAb

Catalog No.: A13791 **1 Publications**

Basic Information

Observed MW

84kDa

Calculated MW

84kDa

Category

Primary antibody

Applications

ELISA, WB

Cross-Reactivity

Mouse, Rat

Background

Predicted to enable small GTPase binding activity. Predicted to be involved in endocytosis; regulation of catalytic activity; and signal transduction. Predicted to act upstream of or within associative learning; memory; and negative regulation of synaptic plasticity. Located in cytoplasm and plasma membrane.

Recommended Dilutions

WB 1:500 - 1:2000

Immunogen Information

Gene ID

9610

Swiss Prot

Q13671

Immunogen

Recombinant fusion protein containing a sequence corresponding to amino acids 1-280 of human RIN1 (NP_004283.2).

Synonyms

RIN1

Contact

 | www.abclonal.com

Product Information

Source

Rabbit

Isotype

IgG

Purification

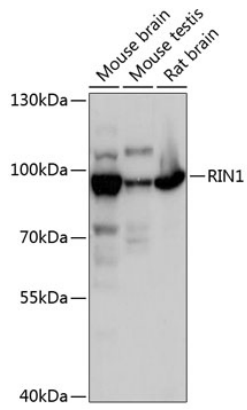
Affinity purification

Storage

Store at -20°C. Avoid freeze / thaw cycles.

Buffer: PBS with 0.01% thimerosal, 50% glycerol, pH7.3.

Validation Data



Western blot analysis of various lysates using RIN1 Rabbit pAb (A13791) at 1:3000 dilution.
Secondary antibody: HRP Goat Anti-Rabbit IgG (H+L) (AS014) at 1:10000 dilution.
Lysates/proteins: 25µg per lane.
Blocking buffer: 3% nonfat dry milk in TBST.
Detection: ECL Basic Kit (RM00020).
Exposure time: 1s.