

# ELMO2 Rabbit pAb

Catalog No.: A13785

## Basic Information

### Observed MW

83kDa

### Calculated MW

83kDa

### Category

Primary antibody

### Applications

ELISA, WB

### Cross-Reactivity

Human, Mouse, Rat

## Background

The protein encoded by this gene interacts with the dedicator of cyto-kinesis 1 protein. Similarity to a *C. elegans* protein suggests that this protein may function in phagocytosis of apoptotic cells and in cell migration. Alternative splicing results in multiple transcript variants.

## Recommended Dilutions

WB 1:500 - 1:2000

## Immunogen Information

### Gene ID

63916

### Swiss Prot

Q96JJ3

### Immunogen

Recombinant fusion protein containing a sequence corresponding to amino acids 42-120 of human ELMO2 (NP\_877496.1).

### Synonyms

VMPI; CED12; CED-12; ELMO-2; Ced-12A; ELMO2

## Contact

 | [www.abclonal.com](http://www.abclonal.com)

## Product Information

### Source

Rabbit

### Isotype

IgG

### Purification

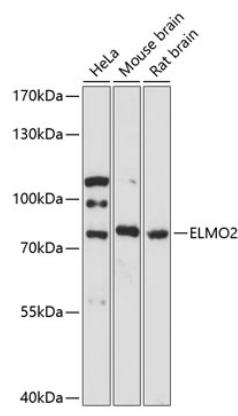
Affinity purification

### Storage

Store at -20°C. Avoid freeze / thaw cycles.

Buffer: PBS with 0.01% thimerosal, 50% glycerol, pH 7.3.

# Validation Data



Western blot analysis of various lysates using ELMO2 Rabbit pAb (A13785) at 1:3000 dilution.  
Secondary antibody: HRP Goat Anti-Rabbit IgG (H+L) (A5014) at 1:10000 dilution.  
Lysates/proteins: 25µg per lane.  
Blocking buffer: 3% nonfat dry milk in TBST.  
Detection: ECL Basic Kit (RM00020).  
Exposure time: 90s.