

CAPN6 Rabbit pAb

Catalog No.: A13777

Basic Information

Observed MW

68kDa

Calculated MW

75kDa

Category

Primary antibody

Applications

ELISA, WB

Cross-Reactivity

Rat

Background

Calpains are ubiquitous, well-conserved family of calcium-dependent, cysteine proteases. The calpain proteins are heterodimers consisting of an invariant small subunit and variable large subunits. The large subunit possesses a cysteine protease domain, and both subunits possess calcium-binding domains. Calpains have been implicated in neurodegenerative processes, as their activation can be triggered by calcium influx and oxidative stress. The protein encoded by this gene is highly expressed in the placenta. Its C-terminal region lacks any homology to the calmodulin-like domain of other calpains. The protein lacks critical active site residues and thus is suggested to be proteolytically inactive. The protein may play a role in tumor formation by inhibiting apoptosis and promoting angiogenesis.

Recommended Dilutions

WB 1:500 - 1:2000

Immunogen Information

Gene ID

827

Swiss Prot

Q9Y6Q1

Immunogen

Recombinant fusion protein containing a sequence corresponding to amino acids 1-270 of human CAPN6 (NP_055104.2).

Synonyms

CANPX; CAPNX; CalpM; DJ914P14.1; CAPN6

Contact

 | www.abclonal.com

Product Information

Source

Rabbit

Isotype

IgG

Purification

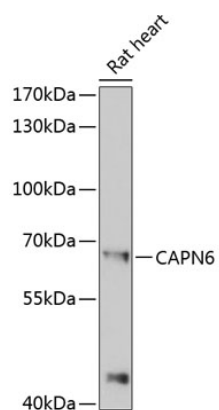
Affinity purification

Storage

Store at -20°C. Avoid freeze / thaw cycles.

Buffer: PBS with 0.02% sodium azide, 50% glycerol, pH7.3.

Validation Data



Western blot analysis of extracts of rat heart, using CAPN6 antibody (A13777) at 1:3000 dilution.
Secondary antibody: HRP Goat Anti-Rabbit IgG (H+L) (A5014) at 1:10000 dilution.
Lysates/proteins: 25µg per lane.
Blocking buffer: 3% nonfat dry milk in TBST.
Detection: ECL Basic Kit (RM00020).
Exposure time: 90s.