

# HSF1 Rabbit pAb

Catalog No.: A13765 **5 Publications**

## Basic Information

### Observed MW

90kDa

### Calculated MW

57kDa

### Category

Primary antibody

### Applications

ELISA, WB, IHC-P, IF/ICC

### Cross-Reactivity

Human, Mouse, Rat

## Background

The product of this gene is a transcription factor that is rapidly induced after temperature stress and binds heat shock promoter elements (HSE). This protein plays a role in the regulation of lifespan. Expression of this gene is repressed by phosphorylation, which promotes binding by heat shock protein 90.

## Recommended Dilutions

<b>WB</b>	1:500 - 1:2000
<b>IHC-P</b>	1:50 - 1:100
<b>IF/ICC</b>	1:50 - 1:100

## Immunogen Information

### Gene ID

3297

### Swiss Prot

Q00613

### Immunogen

Recombinant fusion protein containing a sequence corresponding to amino acids 350-529 of human HSF1 (NP\_005517.1).

### Synonyms

HSTF1; HSF1

## Contact

 | [www.abclonal.com](http://www.abclonal.com)

## Product Information

### Source

Rabbit

### Isotype

IgG

### Purification

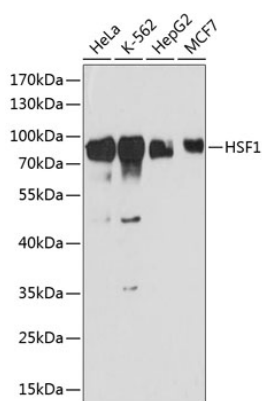
Affinity purification

### Storage

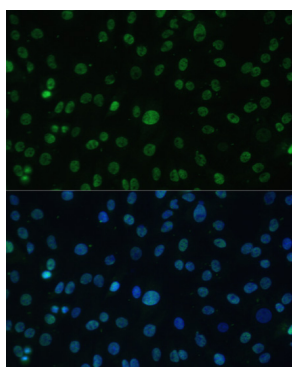
Store at -20°C. Avoid freeze / thaw cycles.

Buffer: PBS with 0.01% thimerosal, 50% glycerol, pH7.3.

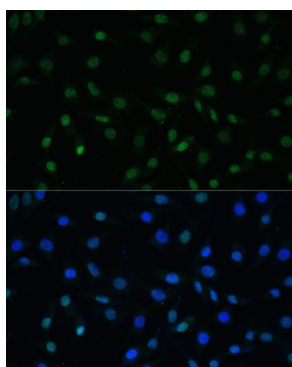
## Validation Data



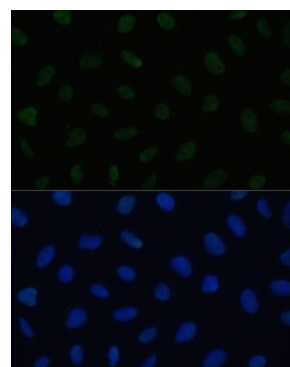
Western blot analysis of various lysates using HSF1 Rabbit pAb (A13765) at 1:3000 dilution.  
Secondary antibody: HRP Goat Anti-Rabbit IgG (H+L) (AS014) at 1:10000 dilution.  
Lysates/proteins: 25µg per lane.  
Blocking buffer: 3% nonfat dry milk in TBST.  
Detection: ECL Basic Kit (RM00020).  
Exposure time: 90s.



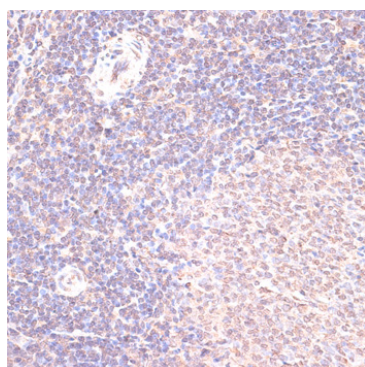
Immunofluorescence analysis of C6 cells using HSF1 Rabbit pAb (A13765) at dilution of 1:100. Blue: DAPI for nuclear staining.



Immunofluorescence analysis of L929 cells using HSF1 Rabbit pAb (A13765) at dilution of 1:100. Blue: DAPI for nuclear staining.



Immunofluorescence analysis of U2OS cells using HSF1 Rabbit pAb (A13765) at dilution of 1:100. Blue: DAPI for nuclear staining.



Immunohistochemistry analysis of HSF1 in paraffin-embedded rat spleen using HSF1 Rabbit pAb (A13765) at dilution of 1:100 (40x lens). Perform microwave antigen retrieval with 10 mM PBS buffer pH 7.2 before commencing with IHC staining protocol.