

CYP2W1 Rabbit pAb

Catalog No.: A13762

Basic Information

Observed MW

54kDa

Calculated MW

54kDa

Category

Primary antibody

Applications

ELISA, WB

Cross-Reactivity

Mouse

Background

This gene encodes a member of the cytochrome P450 superfamily of enzymes. The cytochrome P450 proteins are monooxygenases which catalyze many reactions involved in drug metabolism and synthesis of cholesterol, steroids and other lipids.

Recommended Dilutions

WB 1:500 - 1:2000

Immunogen Information

Gene ID

54905

Swiss Prot

Q8TAV3

Immunogen

Recombinant fusion protein containing a sequence corresponding to amino acids 141-490 of human CYP2W1 (NP_060251.2).

Synonyms

CYP2W1

Contact

 | www.abclonal.com

Product Information

Source

Rabbit

Isotype

IgG

Purification

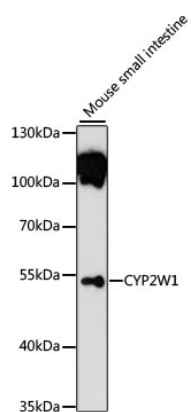
Affinity purification

Storage

Store at -20°C. Avoid freeze / thaw cycles.

Buffer: PBS with 0.01% thimerosal, 50% glycerol, pH7.3.

Validation Data



Western blot analysis of extracts of mouse small intestine, using CYP2W1 antibody (A13762) at 1:1000 dilution.

Secondary antibody: HRP Goat Anti-Rabbit IgG (H+L) (A5014) at 1:10000 dilution.

Lysates/proteins: 25µg per lane.

Blocking buffer: 3% nonfat dry milk in TBST.

Detection: ECL Basic Kit (RM00020).

Exposure time: 90s.