

KLF17 Rabbit pAb

Catalog No.: A13743

Basic Information

Observed MW

43kDa

Calculated MW

43kDa

Category

Primary antibody

Applications

ELISA, WB

Cross-Reactivity

Human, Mouse

Background

Enables sequence-specific double-stranded DNA binding activity. Predicted to be involved in negative regulation of transcription by RNA polymerase II. Predicted to act upstream of or within gamete generation. Predicted to be located in nucleus. Predicted to be part of chromatin.

Recommended Dilutions

WB 1:500 - 1:2000

Immunogen Information

Gene ID

128209

Swiss Prot

Q5JT82

Immunogen

Recombinant fusion protein containing a sequence corresponding to amino acids 210-389 of human KLF17 (NP_775755.3).

Synonyms

ZLF393; ZNF393; Zfp393; KLF17

Contact

 | www.abclonal.com

Product Information

Source

Rabbit

Isotype

IgG

Purification

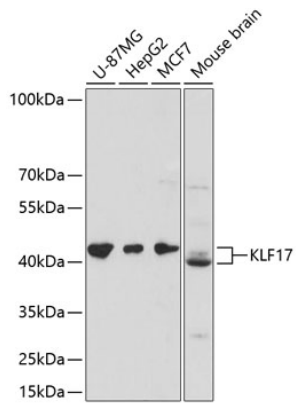
Affinity purification

Storage

Store at -20°C. Avoid freeze / thaw cycles.

Buffer: PBS with 0.01% thimerosal, 50% glycerol, pH 7.3.

Validation Data



Western blot analysis of various lysates using KLF17 Rabbit pAb (A13743) at 1:3000 dilution.
Secondary antibody: HRP Goat Anti-Rabbit IgG (H+L) (AS014) at 1:10000 dilution.
Lysates/proteins: 25µg per lane.
Blocking buffer: 3% nonfat dry milk in TBST.
Detection: ECL Basic Kit (RM00020).
Exposure time: 30s.