

PIH1D1 Rabbit pAb

Catalog No.: A13718

Basic Information

Observed MW

38kDa

Calculated MW

32kDa

Category

Primary antibody

Applications

ELISA, WB

Cross-Reactivity

Human

Background

Enables several functions, including RNA polymerase I core promoter sequence-specific DNA binding activity; enzyme binding activity; and phosphoprotein binding activity. Involved in several processes, including box C/D snoRNP assembly; positive regulation of signal transduction; and regulation of cellular protein metabolic process. Located in cytoplasm and nucleolus. Part of R2TP complex and pre-snoRNP complex.

Recommended Dilutions

WB 1:500 - 1:2000

Immunogen Information

Gene ID

55011

Swiss Prot

Q9NWS0

Immunogen

Recombinant fusion protein containing a sequence corresponding to amino acids 1-290 of human PIH1D1 (NP_060386.1).

Synonyms

Pih1; MOT48; NOP17; DNAAF14; PIH1D1

Contact

 | www.abclonal.com

Product Information

Source

Rabbit

Isotype

IgG

Purification

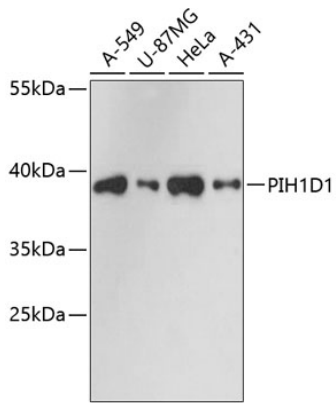
Affinity purification

Storage

Store at -20°C. Avoid freeze / thaw cycles.

Buffer: PBS with 0.01% thimerosal, 50% glycerol, pH7.3.

Validation Data



Western blot analysis of extracts of various cell lines, using PIH1D1 antibody (A13718) at 1:3000 dilution.

Secondary antibody: HRP Goat Anti-Rabbit IgG (H+L) (AS014) at 1:10000 dilution.

Lysates/proteins: 25µg per lane.

Blocking buffer: 3% nonfat dry milk in TBST.

Detection: ECL Basic Kit (RM00020).

Exposure time: 90s.