

# GNPDA1 Rabbit pAb

Catalog No.: A13717

## Basic Information

### Observed MW

30-33kDa

### Calculated MW

33kDa

### Category

Primary antibody

### Applications

ELISA, WB

### Cross-Reactivity

Human, Mouse, Rat

## Background

Glucosamine-6-phosphate deaminase (EC 3.5.99.6) is an allosteric enzyme that catalyzes the reversible conversion of D-glucosamine-6-phosphate into D-fructose-6-phosphate and ammonium (Arreola et al., 2003 [PubMed 12965206]).

## Recommended Dilutions

WB 1:500 - 1:2000

## Immunogen Information

### Gene ID

10007

### Swiss Prot

P46926

### Immunogen

Recombinant fusion protein containing a sequence corresponding to amino acids 1-70 of human GNPDA1 (NP\_005462.1).

### Synonyms

GPI; HLN; GNP1; GNPI; GNPDA; GNPDA1

## Contact

 | [www.abclonal.com](http://www.abclonal.com)

## Product Information

### Source

Rabbit

### Isotype

IgG

### Purification

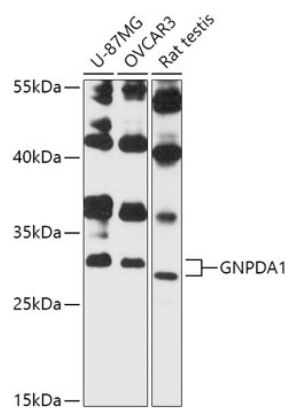
Affinity purification

### Storage

Store at -20°C. Avoid freeze / thaw cycles.

Buffer: PBS with 0.01% thimerosal, 50% glycerol, pH7.3.

Validation Data



Western blot analysis of various lysates using GNPDA1 Rabbit pAb (A13717) at 1:3000 dilution.  
Secondary antibody: HRP Goat Anti-Rabbit IgG (H+L) (A5014) at 1:10000 dilution.  
Lysates/proteins: 25µg per lane.  
Blocking buffer: 3% nonfat dry milk in TBST.  
Detection: ECL Basic Kit (RM00020).  
Exposure time: 30s.