

MDFI Rabbit pAb

Catalog No.: A13709

Basic Information

Observed MW

35kDa

Calculated MW

25kDa

Category

Primary antibody

Applications

ELISA, WB, IF/ICC

Cross-Reactivity

Human, Mouse, Rat

Background

This protein is a transcription factor that negatively regulates other myogenic family proteins. Studies of the mouse homolog, I-mf, show that it interferes with myogenic factor function by masking nuclear localization signals and preventing DNA binding. Knockout mouse studies show defects in the formation of vertebrae and ribs that also involve cartilage formation in these structures.

Recommended Dilutions

WB	1:500 - 1:2000
IF/ICC	1:50 - 1:200

Immunogen Information

Gene ID

4188

Swiss Prot

Q99750

Immunogen

Recombinant fusion protein containing a sequence corresponding to amino acids 1-160 of human MDFI (NP_005577.1).

Synonyms

I-MF; I-mfa; MDFI

Contact

 | www.abclonal.com

Product Information

Source

Rabbit

Isotype

IgG

Purification

Affinity purification

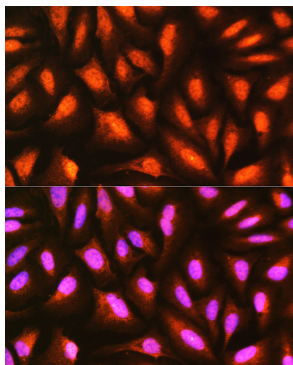
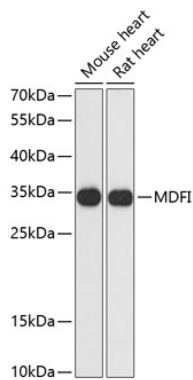
Storage

Store at -20°C. Avoid freeze / thaw cycles.

Buffer: PBS with 0.01% thimerosal, 50% glycerol, pH7.3.

Validation Data

Western blot analysis of various lysates using MDFI Rabbit pAb (A13709) at 1:3000 dilution.



Immunofluorescence analysis of U-2 OS cells using MDFI Rabbit pAb (A13709) at dilution of 1:100 (40x lens). Secondary antibody: Cy3 Goat Anti-Rabbit IgG (H+L) (AS007) at 1:500 dilution. Blue: DAPI for nuclear staining.