

# TNFAIP8L2 Rabbit pAb

Catalog No.: A13698 **1 Publications**

## Basic Information

### Observed MW

18kDa

### Calculated MW

21kDa

### Category

Primary antibody

### Applications

ELISA, WB, IF/ICC, IP

### Cross-Reactivity

Human, Mouse, Rat

## Background

Predicted to be involved in negative regulation of T cell activation and negative regulation of inflammatory response. Predicted to be active in cytoplasm.

## Recommended Dilutions

**WB** 1:500 - 1:2000

**IF/ICC** 1:50 - 1:200

**IP** 0.5µg-4µg antibody for  
25µg-100µg extracts of  
whole cells

## Immunogen Information

### Gene ID

79626

### Swiss Prot

Q6P589

### Immunogen

Recombinant fusion protein containing a sequence corresponding to amino acids 1-184 of human TNFAIP8L2 (NP\_078851.2).

### Synonyms

TIPE2; TNFAIP8L2

## Contact

 | [www.abclonal.com](http://www.abclonal.com)

## Product Information

### Source

Rabbit

### Isotype

IgG

### Purification

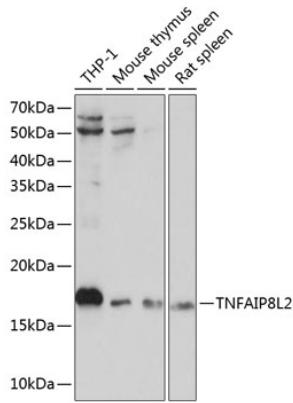
Affinity purification

### Storage

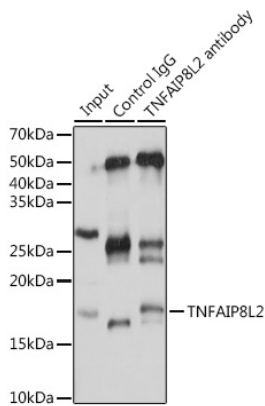
Store at -20°C. Avoid freeze / thaw cycles.

Buffer: PBS with 0.01% thimerosal, 50% glycerol, pH7.3.

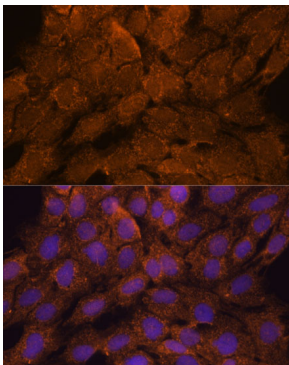
## Validation Data



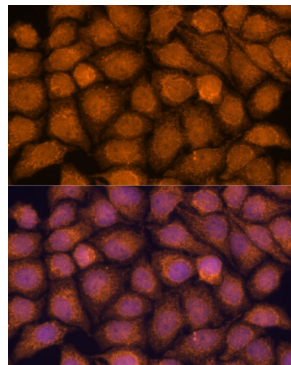
Western blot analysis of various lysates using TNFAIP8L2 Rabbit pAb (A13698) at 1:1000 dilution. Secondary antibody: HRP Goat Anti-Rabbit IgG (H+L) (AS014) at 1:10000 dilution. Lysates/proteins: 25µg per lane. Blocking buffer: 3% nonfat dry milk in TBST. Detection: ECL Basic Kit (RM00020). Exposure time: 10s.



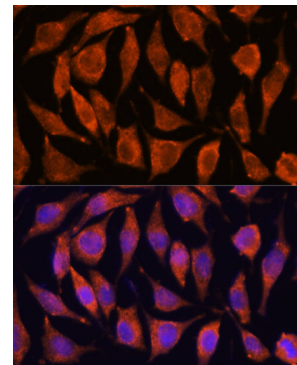
Immunoprecipitation analysis of 25 µg extracts of Mouse spleen cells using 3 µg TNFAIP8L2 antibody (A13698). Western blot was performed from the immunoprecipitate using TNFAIP8L2 antibody (A13698) at a dilution of 1:1000.



Immunofluorescence analysis of C6 cells using TNFAIP8L2 Rabbit pAb (A13698) at dilution of 1:100. Secondary antibody: Cy3 Goat Anti-Rabbit IgG (H+L) (AS007) at 1:500 dilution. Blue: DAPI for nuclear staining.



Immunofluorescence analysis of HeLa cells using TNFAIP8L2 Rabbit pAb (A13698) at dilution of 1:100. Secondary antibody: Cy3 Goat Anti-Rabbit IgG (H+L) (AS007) at 1:500 dilution. Blue: DAPI for nuclear staining.



Immunofluorescence analysis of L929 cells using TNFAIP8L2 Rabbit pAb (A13698) at dilution of 1:100. Secondary antibody: Cy3 Goat Anti-Rabbit IgG (H+L) (AS007) at 1:500 dilution. Blue: DAPI for nuclear staining.