

# CPLX3 Rabbit pAb

Catalog No.: A13694

## Basic Information

---

### Observed MW

18kDa

### Calculated MW

18kDa

### Category

Primary antibody

### Applications

ELISA, WB

### Cross-Reactivity

Mouse, Rat

## Background

---

Predicted to enable SNARE binding activity. Predicted to be involved in regulation of neurotransmitter secretion and synaptic vesicle exocytosis. Predicted to be located in plasma membrane and synapse. Predicted to be part of SNARE complex. Predicted to be active in photoreceptor ribbon synapse and terminal bouton. Predicted to be anchored component of presynaptic active zone membrane and anchored component of synaptic vesicle membrane.

## Recommended Dilutions

---

WB 1:500 - 1:2000

## Immunogen Information

---

### Gene ID

594855

### Swiss Prot

Q8WVH0

### Immunogen

Recombinant fusion protein containing a sequence corresponding to amino acids 59-158 of human CPLX3 (NP\_001025176.1).

### Synonyms

CPXIII; CPX-III; Nbla11589; CPLX3

## Contact

---

 | [www.abclonal.com](http://www.abclonal.com)

## Product Information

---

### Source

Rabbit

### Isotype

IgG

### Purification

Affinity purification

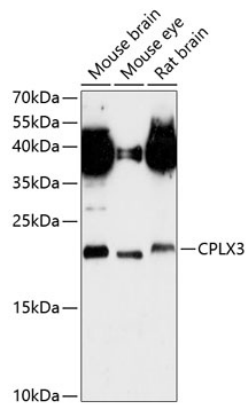
### Storage

Store at -20°C. Avoid freeze / thaw cycles.

Buffer: PBS with 0.01% thimerosal, 50% glycerol, pH7.3.

## Validation Data

---



Western blot analysis of extracts of various cell lines, using CPLX3 antibody (A13694) at 1:3000 dilution.

Secondary antibody: HRP Goat Anti-Rabbit IgG (H+L) (AS014) at 1:10000 dilution.

Lysates/proteins: 25µg per lane.

Blocking buffer: 3% nonfat dry milk in TBST.

Detection: ECL Enhanced Kit (RM00021).

Exposure time: 90s.