

# SLC2A5 Rabbit pAb

Catalog No.: A13650 **1 Publications**

## Basic Information

### Observed MW

65kDa

### Calculated MW

55kDa

### Category

Primary antibody

### Applications

ELISA, WB

### Cross-Reactivity

Human, Mouse

## Background

The protein encoded by this gene is a fructose transporter responsible for fructose uptake by the small intestine. The encoded protein also is necessary for the increase in blood pressure due to high dietary fructose consumption.

## Recommended Dilutions

**WB** 1:200 - 1:2000

## Immunogen Information

### Gene ID

6518

### Swiss Prot

P22732

### Immunogen

A synthetic peptide corresponding to a sequence within amino acids 1-100 of human SLC2A5 (NP\_003030.1).

### Synonyms

GLUT5; GLUT-5; SLC2A5

## Contact

 | [www.abclonal.com](http://www.abclonal.com)

## Product Information

### Source

Rabbit

### Isotype

IgG

### Purification

Affinity purification

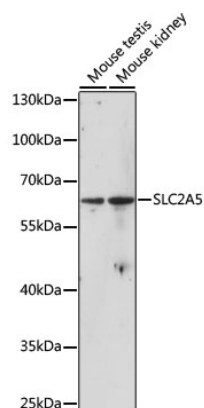
### Storage

Store at -20°C. Avoid freeze / thaw cycles.

Buffer: PBS with 0.01% thimerosal, 50% glycerol, pH 7.3.

## Validation Data

---



Western blot analysis of various lysates using SLC2A5 Rabbit pAb (A13650) at 1:1000 dilution.  
Secondary antibody: HRP Goat Anti-Rabbit IgG (H+L) (AS014) at 1:10000 dilution.  
Lysates/proteins: 25µg per lane.  
Blocking buffer: 3% nonfat dry milk in TBST.  
Detection: ECL Enhanced Kit (RM00021).  
Exposure time: 20s.