

C11orf30 Rabbit pAb

Catalog No.: A13643

Basic Information

Observed MW

Refer to figures

Calculated MW

141kDa

Category

Primary antibody

Applications

ELISA, WB, IF/ICC

Cross-Reactivity

Human, Mouse, Rat

Background

Predicted to enable identical protein binding activity. Predicted to be involved in DNA repair; chromatin organization; and regulation of transcription, DNA-templated. Located in nucleoplasm.

Recommended Dilutions

WB	1:500 - 1:2000
IF/ICC	1:50 - 1:200

Immunogen Information

Gene ID	Swiss Prot
56946	Q7Z589

Immunogen

Recombinant fusion protein containing a sequence corresponding to amino acids 1153-1322 of human C11orf30 (NP_064578.2).

Synonyms

GL002; C11orf30

Contact

 | www.abclonal.com

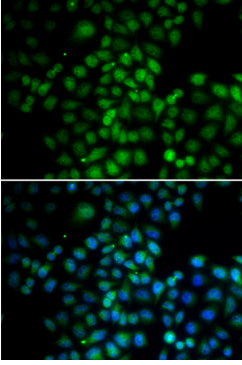
Product Information

Source	Isotype	Purification
Rabbit	IgG	Affinity purification

Storage

Store at -20°C. Avoid freeze / thaw cycles.
Buffer: PBS with 0.02% sodium azide, 50% glycerol, pH7.3.

Validation Data



Immunofluorescence analysis of HeLa cells using C11orf30 antibody (A13643). Blue: DAPI for nuclear staining.